

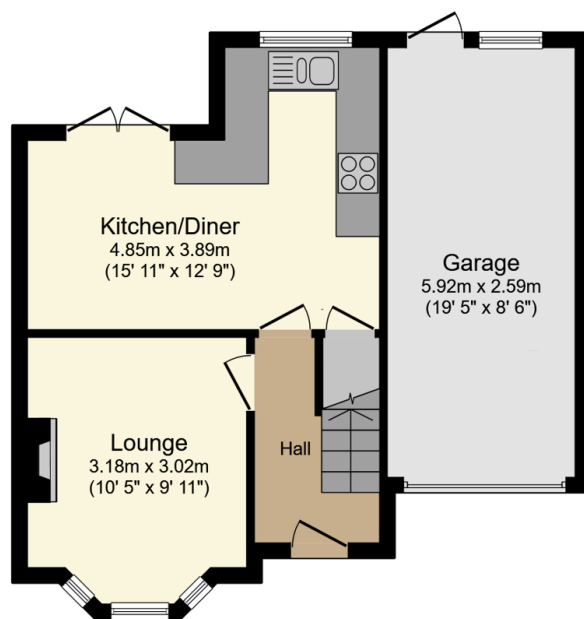
176 Stourbridge Road

Guide Price £250,000

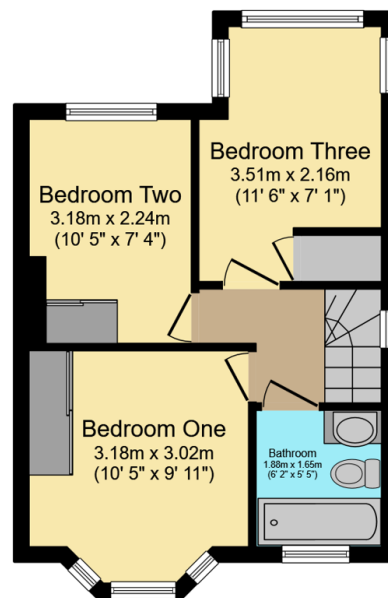
3 1 1



- Please Quote PC0649
- Views Across Broadwaters Park
- Lounge and Large Kitchen/Diner
- Nearby Walks to Nature Reserves and Canal
- A Must View Property
- Rarely Available Broadwaters Location
- Three Bedrooms
- Garden and Driveway Parking
- Stourbridge/Birmingham Side of Kidderminster
- Hit the 'Request Details' or 'Email Agent' button to secure your viewing now!



Ground Floor

Floor area 47.3 m² (509 sq.ft.)

First Floor

Floor area 32.0 m² (344 sq.ft.)TOTAL: 79.3 m² (854 sq.ft.)

This floor plan is for illustrative purposes only. It is not drawn to scale. Any measurements, floor areas (including any total floor area), openings and orientations are approximate. No details are guaranteed, they cannot be relied upon for any purpose and do not form any part of any agreement. No liability is taken for any error, omission or misstatement. A party must rely upon its own inspection(s). Powered by www.Propertybox.io

Quote Reference PC0649. CLICK 'CONTACT' to book a viewing. Three bedroom Semi- Detached family home located in a convenient location to the Stourbridge/Birmingham side of Kidderminster. Views across Broadwaters Park to the front, excellent outdoor recreation space leading to nearby Springfield Nature Reserve and onward to canal-side walks. The property comprises of a good sized lounge and a kitchen / diner to the ground floor. To the first floor there are three good sized bedrooms and a family bathroom. There is a lawned family garden with patio area. A good sized block paved driveway offering parking for multiple vehicles.

PHIL COOK



@ phil.cook@exp.uk.com

philcook.exp.uk.com

07508 423 891

Large garage to the side with doorway at the rear. Central heating and double glazing throughout. A great family home in a rarely available location. This is a must see property and will sell quickly. Hit the 'Request Details' or 'Email Agent' button to secure your viewing now!