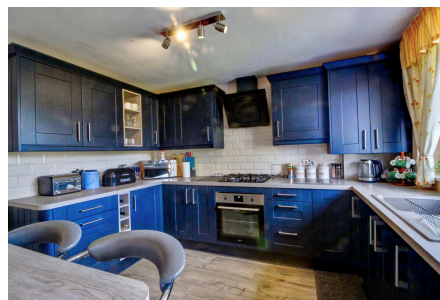


7 Midhurst Close, Packmoor

£340,000

🛏️ 3 🚿 1 🚗 1



This is a rare opportunity to make this exquisite 3 bedroom detached bungalow your home. Experience the perfect blend of comfort and luxury in a prime location. Don't miss the chance to view this exceptional property and imagine your future here.

Key Features

- Detached Bungalow
- Modern Kitchen
- 2 Private Driveways
- Great Location
- Attached Garage
- Three Bedrooms
- Stylish Shower Room
- Luxury Home
- Spacious Gardens
- Workshop (Potential Home Office)



Ground Floor

This floor plan is for illustrative purposes only. It is not drawn to scale. Any measurements, floor areas (including any total floor area), openings and orientations are approximate. No details are guaranteed, they cannot be relied upon for any purpose and do not form any part of any agreement. No liability is taken for any error, omission or misstatement. A party must rely upon its own inspection(s). Powered by www.Propertybox.io