

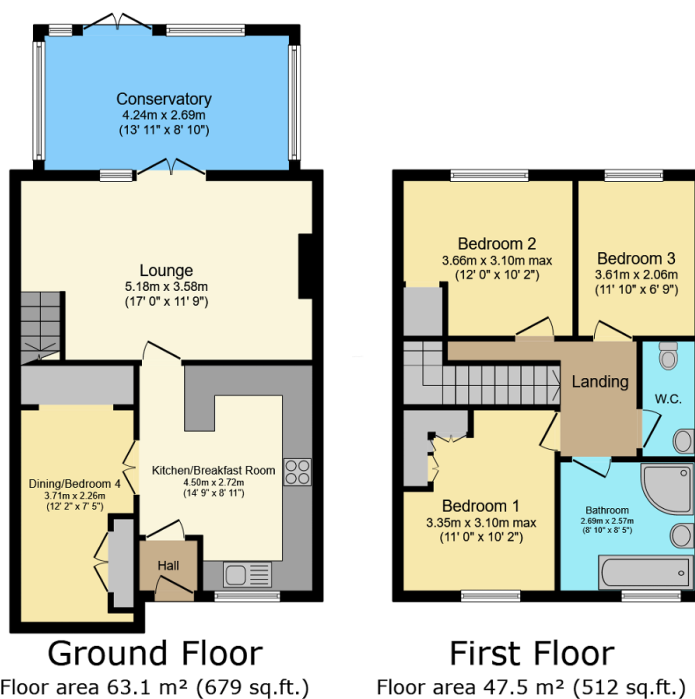
44 Chichester Avenue, Netherton

Offers Over £220,000

3 1 2



- Three bedroom Mid townhouse
- Dining Room / Bedroom 4
- Conservatory
- Double glazing
- No Upward Chain
- Lounge
- Breakfast Kitchen
- First floor bathroom with separate WC
- Central Heating
- Block paved Drive to the front



TOTAL: 110.6 m² (1,191 sq.ft.)

This floor plan is for illustrative purposes only. It is not drawn to scale. Any measurements, floor areas (including any total floor area), openings and orientations are approximate. No details are guaranteed, they cannot be relied upon for any purpose and do not form any part of any agreement. No liability is taken for any error, omission or misstatement. A party must rely upon its own inspection(s). Powered by www.Propertybox.io

Ref : KD0658


A well presented three double bedroom townhouse with no upward chain, open views to rear, close to local amenities, comprising of lounge, breakfast kitchen, dining room, conservatory, first floor bathroom with separate WC, block paved drive to front, land scaped rear garden, double glazing, central heating.

KASH DHALIWAL



@kash.dhaliwal@exp.uk.com

 kashdhaliwal.exp.uk.com

 07973 639 578

Viewing recommended