

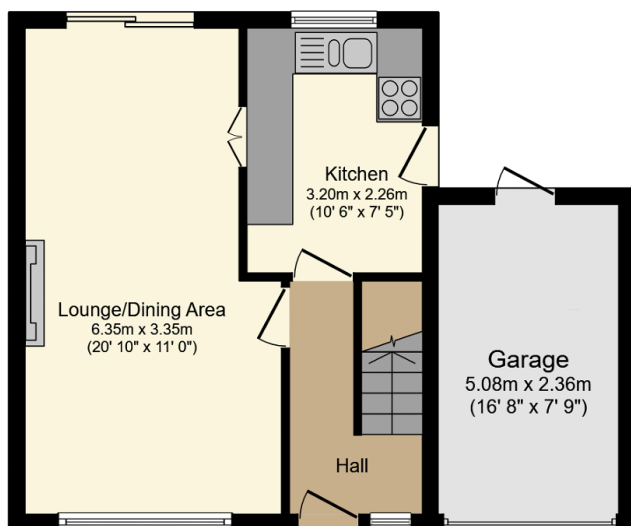
247 Tennyson Way, Offmore Farm, Kidderminster

Guide Price £260,000

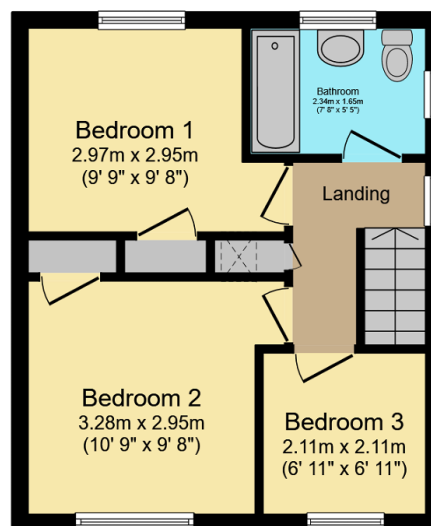
3 1 1



- Quote Reference PC0649
- Popular Offmore Farm Location
- Birmingham Side of Kidderminster
- Good Sized Lounge/ Dining Room
- Early Viewing Advised to Avoid Disappointment
- 3 Bedroom Link Detached Property
- Quiet Cul de Sac Location
- Close to all Local Amenities
- Recently Resurfaced Driveway
- Hit the 'Request Details' or 'Email Agent' button to secure your viewing now!



Ground Floor

Floor area 43.4 m² (467 sq.ft.)

First Floor

Floor area 33.0 m² (355 sq.ft.)TOTAL: 76.4 m² (822 sq.ft.)

This floor plan is for illustrative purposes only. It is not drawn to scale. Any measurements, floor areas (including any total floor area), openings and orientations are approximate. No details are guaranteed, they cannot be relied upon for any purpose and do not form any part of any agreement. No liability is taken for any error, omission or misstatement. A party must rely upon its own inspection(s). Powered by www.Propertybox.io

Quote Reference PC0649. Click 'CONTACT' to book a viewing now. Well presented three bedroom link-detached family home located in the sought-after Offmore Farm area to the Birmingham side of Kidderminster close to the local amenities and good schools. Property comprises large lounge/dining room and kitchen to the ground floor, three good size bedrooms and a bathroom to the first floor. Garden to the rear with patio, lawn and decking areas. Garage with utility space to the rear and a recently re-laid driveway offering good sized parking for

PHIL COOK



@ phil.cook@exp.uk.com

🌐 philcook.exp.uk.com

📞 07508 423 891

multiple vehicles. Central heating and double glazed throughout. This is a must see property, early viewing is advised to avoid disappointment. Hit the 'Request Details' or 'Email Agent' button to secure your viewing now!