

## 49 Portway Road

Offers Over £170,000

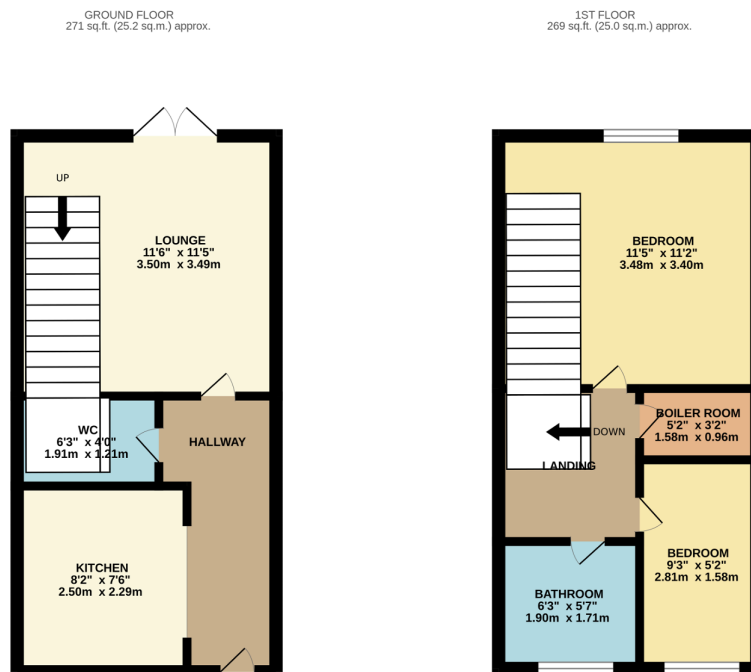
2 1 1



**Please quote ref AT0132** Built in 2008 this modern two bedroom home is just perfect for first time buyers or as a rental investment.

## Key Features

- Two bedroom modern home perfect for first time buyers or as a rental investment
- Built in 2008
- Downstairs WC
- Low maintenance rear garden
- Please quote ref AT0132
- Freehold
- Two rear parking spaces & restriction free parking on the front
- Closed chain - sellers have already found



TWO BEDROOM HOUSE

TOTAL FLOOR AREA : 539 sq.ft. (50.1 sq.m.) approx.

Whilst every attempt has been made to ensure the accuracy of the floorplan contained here, measurements of doors, windows, rooms and any other items are approximate and no responsibility is taken for any error, omission or mis-statement. This plan is for illustrative purposes only and should be used as such by any prospective purchaser. The services, systems and appliances shown have not been tested and no guarantee as to their operability or efficiency can be given.  
 Made with Metropix ©2024.