

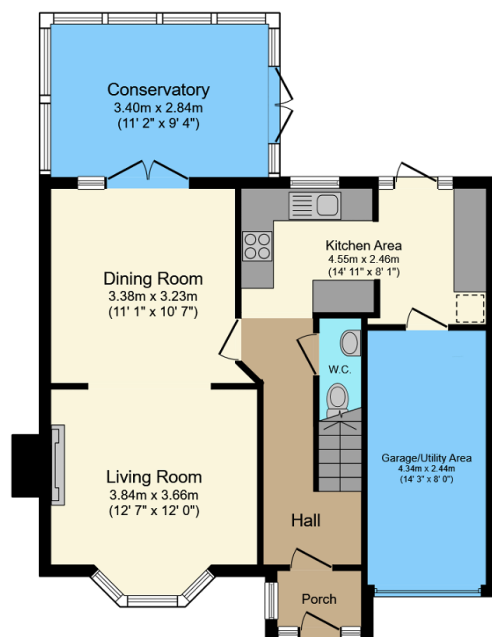
26 Woodfield Avenue, Brierley Hill

Guide Price £265,000

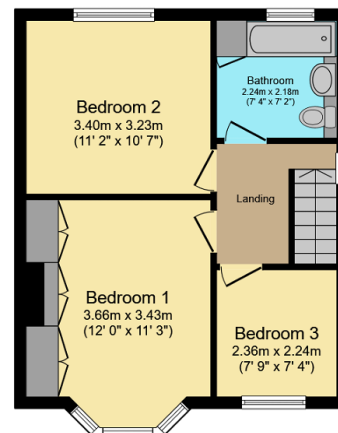
3 1 2



- Quote Reference PC0649
- Quiet and Convenient Location
- Three Bedrooms
- Driveway Parking
- Early Viewing Advised
- Semi-Detached and Extended Cul de Sac Property
- Hallway, Kitchen, Lounge, Dining Room and Conservatory
- Bathroom
- Good Sized Low Maintenance Garden
- Hit the 'Request Details' or 'Email Agent' button to secure your viewing now!



Ground Floor
Floor area 72.6 m² (782 sq.ft.)



First Floor
Floor area 41.2 m² (443 sq.ft.)

TOTAL: 113.8 m² (1,225 sq.ft.)

This floor plan is for illustrative purposes only. It is not drawn to scale. Any measurements, floor areas (including any total floor area), openings and orientations are approximate. No details are guaranteed, they cannot be relied upon for any purpose and do not form any part of any agreement. No liability is taken for any error, omission or misstatement. A party must rely upon its own inspection(s). Powered by www.Propertybox.io