

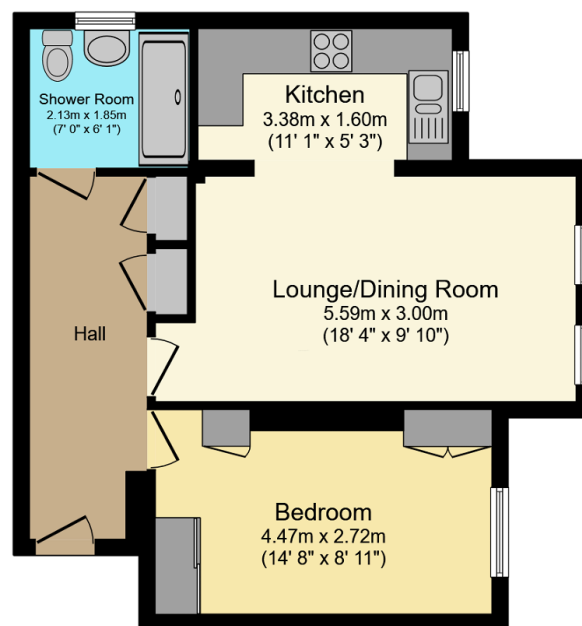
Flat 2, Ketley House, Minster Road, Stourport on Severn

Guide Price £125,000

🛏 1 🚿 1 🛋 1



- Quote Reference PC0649
- Perfect First Time or Investment Purchase
- Double Bedroom
- Parking
- Early Viewing Advised
- Ground Floor Modern Apartment
- Hallway, Kitchen and Lounge Dining Room
- Bathroom
- Convenient Location
- Hit the 'Request Details' or 'Email Agent' button to secure your viewing now!



Floor Plan

Floor area 48.3 m² (520 sq.ft.)TOTAL: 48.3 m² (520 sq.ft.)

This floor plan is for illustrative purposes only. It is not drawn to scale. Any measurements, floor areas (including any total floor area), openings and orientations are approximate. No details are guaranteed, they cannot be relied upon for any purpose and do not form any part of any agreement. No liability is taken for any error, omission or misstatement. A party must rely upon its own inspection(s). Powered by www.Propertybox.io

Quote Reference PC0649. Hit 'Request Details'/'Email Agent' to secure a viewing now! A superb modern ground floor apartment with easy access to the town centre and main road networks, situated in this popular development located off Minster road. Briefly comprising of an open plan living and kitchen area, double bedroom, hallway with storage cupboards and a bathroom. Double glazing, electric heating and an allocated parking space. A perfect first time purchase or investment property. Hit the 'Request Details' or 'Email Agent' button to secure your viewing now!