

Your Logo

## Basford Park Road, Maybank, Newcastle under Lyme ST5.

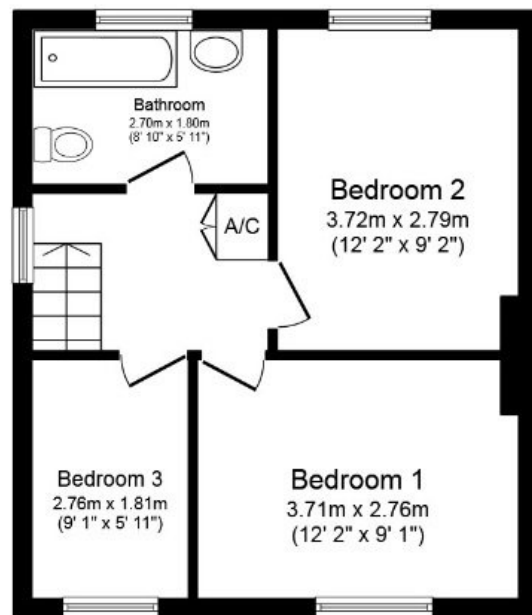
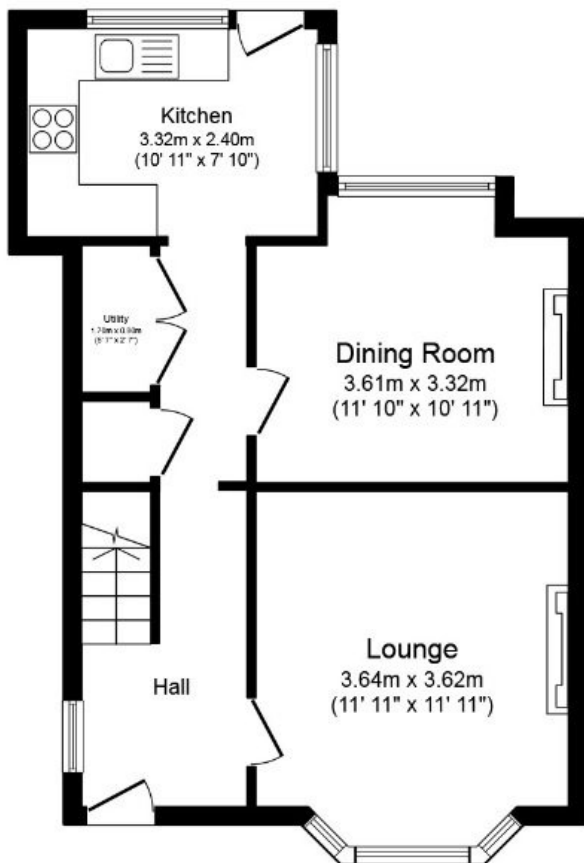
Offers In Region Of £225,000

3 1 2



# Your Logo

- CALL TO BOOK YOUR APPOINTMENT
- TWO RECEPTION ROOMS
- MODERN BATHROOM
- POTENTIAL TO EXTEND (SUBJECT TO PERMISSION)
- CLOSE TO ROYAL STOKE UNIVERSITY HOSPITAL
- THREE BEDROOMS
- MODERN KITCHEN
- UTILITY SPACE & STORAGE
- LARGE REAR GARDEN & PATIO AREA
- PROPERTY REF SW0773



Simon Woolley local estate agent, powered by EXP - is delighted to be selling this well presented, cosy & welcoming family home. Situated on the tree lined Basford Park Road, in the suburb of Maybank in Newcastle Under Lyme.