

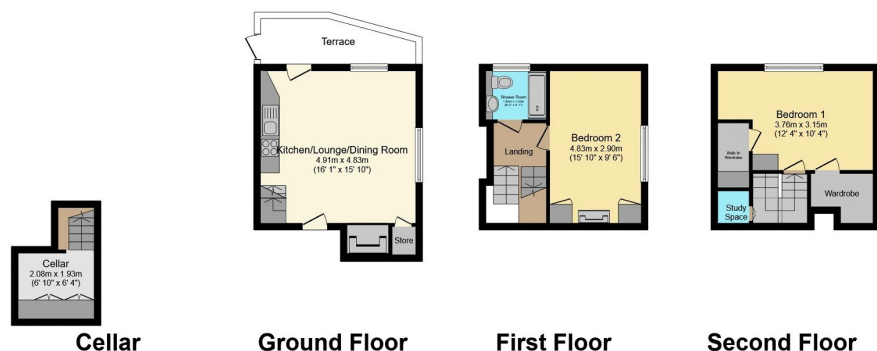
6 Bridgnorth Road, Franche, Kidderminster

Guide Price £185,000

🛏 2 🚿 1 🚗 1



- Quote Reference PC0649
- Popular Franche Location
- Cellar
- Near Asda Convenience Store and Pub
- Superb Period Cottage
- Two Bedrooms
- Lounge/Dining/Kitchen
- Two Double Bedrooms to First and Second Floor
- Close to Sandy Lane Walks Leading Towards Habberley Valley
- Hit the 'Request Details' or 'Email Agent' button to secure your viewing now!



Total floor area 78.9 sq.m. (849 sq.ft.) approx

Whilst every attempt has been made to ensure the accuracy of this floor plan, all measurements are approximate and no responsibility is taken for any error, omission or misstatement. This plan is for illustration purposes only and may not be representative of the property. Plan not to scale. Specifically no guarantee is given on the total square footage of the property if shown on this plan. Any figure given is for initial guidance only and should not be relied on as a basis of valuation. Plan produced for Purple Bricks. Powered by PropertyBOX

Quote Reference PC0649, Click CONTACT to book your viewing. Immaculately presented two bedroom end of terrace home located in the highly sought after location of Franche to the north of Kidderminster towards Bridgnorth. This period cottage property is Grade II Listed and has been very well maintained and enhanced by the present owner. Comprising over 3 floors of a large lounge/kitchen/dining room, access to cellar room on the ground floor, outdoor patio balcony style area to the front. To the first floor there is a master bedroom with shower room, landing area with small study and to the second floor a further double bedroom with impressive

vaulted ceiling. Various car parking locations nearby. Double glazed and central heating throughout. An amazing property perfect for a 'lock-up and leave' downsize or Air BNB investment, providing a rare opportunity in this location so will sell quickly. Hit the 'Request Details' or 'Email Agent' button to secure your viewing now!