

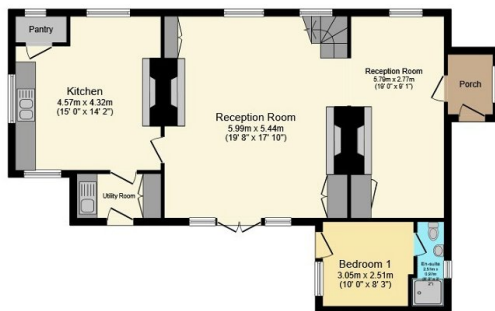
# Marlbrook Cottage, Footrid, Mamble, Kidderminster, Worcestershire, DY14 9JS

Guide Price £700,000

🛏️ 4 🚿 2 🚗 2

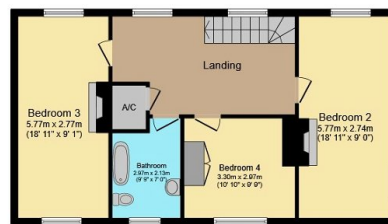


- Quote Reference JS0667
- Wealth of Charm and Character
- Delightful Large Gardens with Babbling Brook
- Sumptuous Bathroom and Lovely Breakfast Kitchen
- 3 Excellent Bedrooms and En Suite to Ground Floor
- Beautiful 3/4 Bed Detached Country Cottage
- Wonderful Tranquil Setting
- Impressive Reception Rooms
- Recent Upvc Double Glazing
- Double Timber Garage and Good Parking



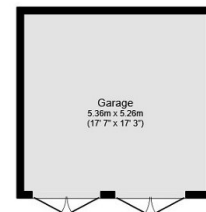
**Ground Floor**

Floor area 85.7 sq.m. (922 sq.ft.) approx



**First Floor**

Floor area 66.5 sq.m. (716 sq.ft.) approx



**Garage**

Floor area 28.6 sq.m. (308 sq.ft.) approx

Total floor area 180.8 sq.m. (1,946 sq.ft.) approx

Whilst every attempt has been made to ensure the accuracy of this floor plan, all measurements are approximate and no responsibility is taken for any error, omission or misstatement. This plan is for illustration purposes only and may not be representative of the property. Plan not to scale. Specifically no guarantee is given on the total square footage of the property if shown on this plan. Any figure given is for initial guidance only and should not be relied on as a basis of valuation. Plan produced for Purple Bricks. Powered by PropertyBOX

Enjoying an idyllic and tranquil setting just off the beaten track and standing in large delightfully kept gardens with a babbling brook and south facing aspect, this gorgeous 3/4 Bedroom Detached Cottage affords delightful and deceptively spacious family accommodation which has recently been further enhanced by majority Upvc double glazed replacement windows and a new boiler. Presented in outstanding order and enjoying numerous wonderful features this is a truly superb opportunity that simply must be seen.