

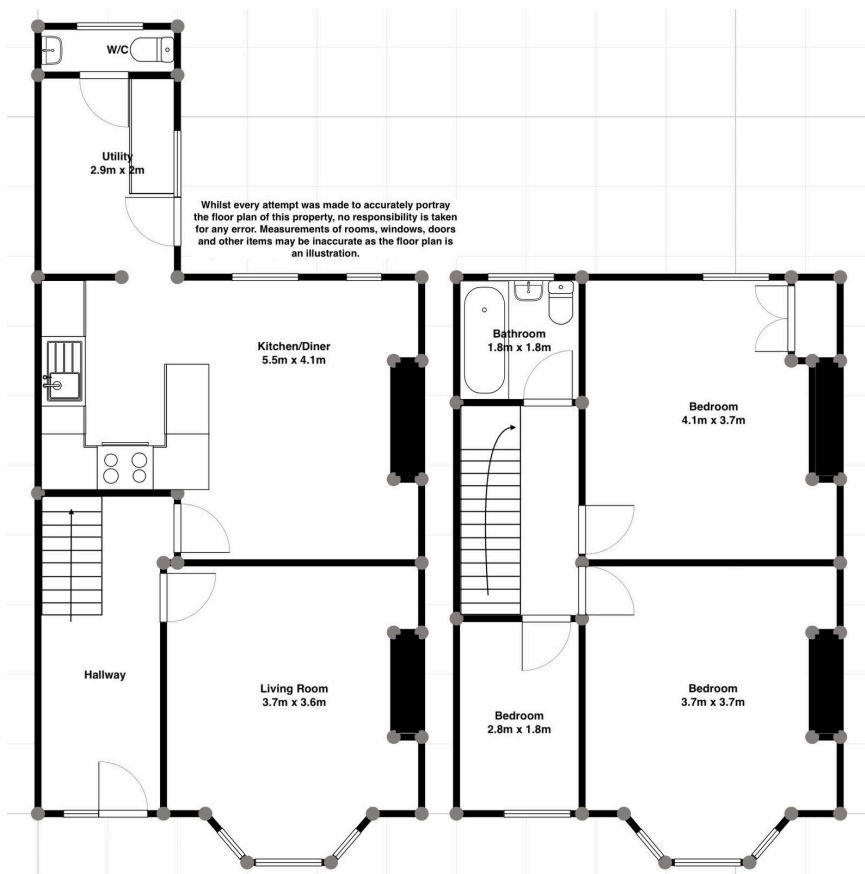
Christchurch Road, Newport, NP19 7SJ

Offers Over £240,000

3 2 2



- PROPERTY REF: LC0723
- OFFERED WITH NO ONWARD CHAIN
- BRIGHT AND AIRY OPEN-PLAN KITCHEN AND DINING AREA
- LARGE DOUBLE GARAGE FOR OFF ROAD PARKING
- FULLY REFURBISHED THROUGHOUT TO A HIGH STANDARD
- THREE BEDROOM MID-TERRACE PROPERTY
- SOUGHT AFTER AREA OF NEWPORT
- LOW MAINTENCE COURTYARD STYLE GARDEN
- BEAUTIFUL TRADITIONAL FEATURES SUCH AS LARGE BAY WINDOWS
- EXCELLENT TRANSPORT LINKS AND CLOSE TO LOCAL AMENITIES



QUOTE PROPERTY REF: LC0723. A beautifully refurbished three-bedroom Victorian bay-fronted terrace in a sought-after area of Newport. This stylish home offers spacious rooms with high ceilings, an open-plan kitchen/diner, utility and cloakroom, plus a modern bathroom. Outside benefits include a courtyard garden, large garage with off-road parking and solar panels. Ideally located close to local schools, shops and excellent road and rail links for commuters.