

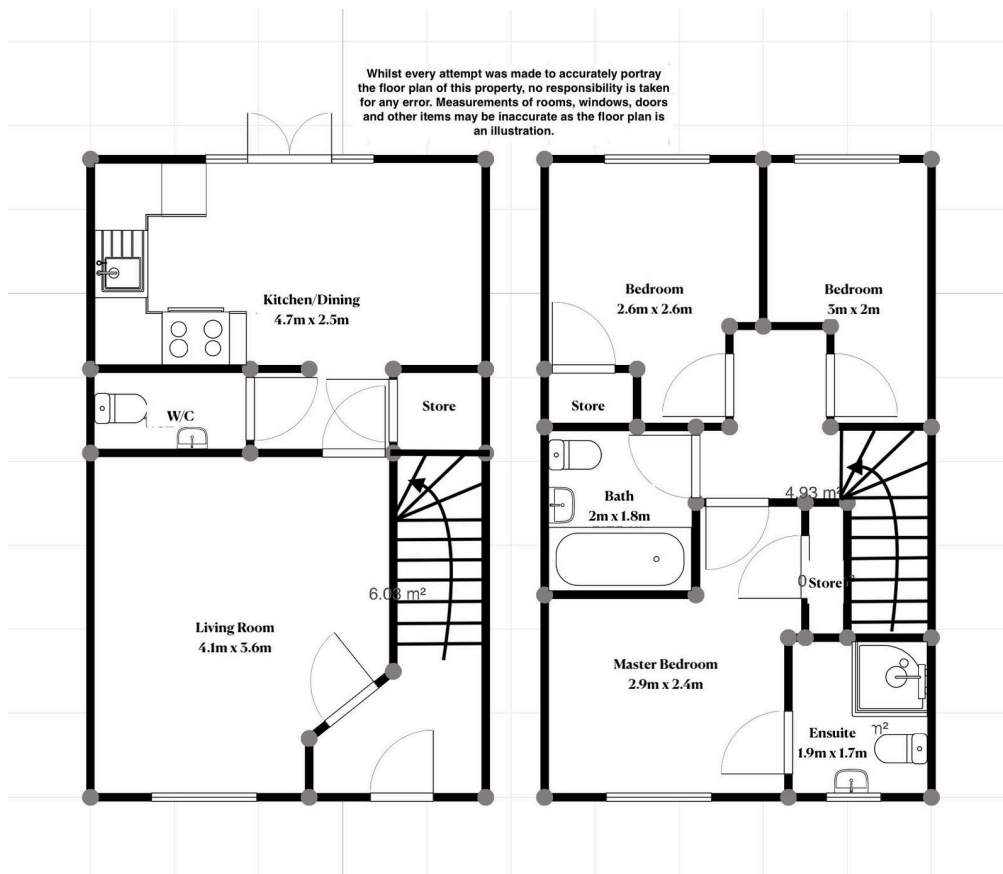
6 Lle'r Gelli

Guide Price £270,000

3 2 1



- PROPERTY REF: LC0723
- SOUGHT AFTER AREA OF CAERPHILLY
- DRIVEWAY PARKING
- EXCELLENT TRANSPORT LINKS
- WITHIN WALKING DISTANCE TO CAERPHILLY TOWN
- 3 BEDROOM, DETACHED HOUSE
- CLOSE TO LOCAL AMENITIES
- TWO BATHROOMS AND DOWNSTAIRS CLOAKROOM
- LOVELY, SOUTH-WEST FACING GARDEN
- IDEAL FOR FAMILIES OR FIRST TIME BUYERS



QUOTE PROPERTY REF: LC0723

Nicely presented three bedroom detached house in a sought after location of Caerphilly. Close to local amenities and with excellent transport links. Caerphilly town centre within walking distance. Ideal for families or first time buyers. Must View! Click to read full details.