

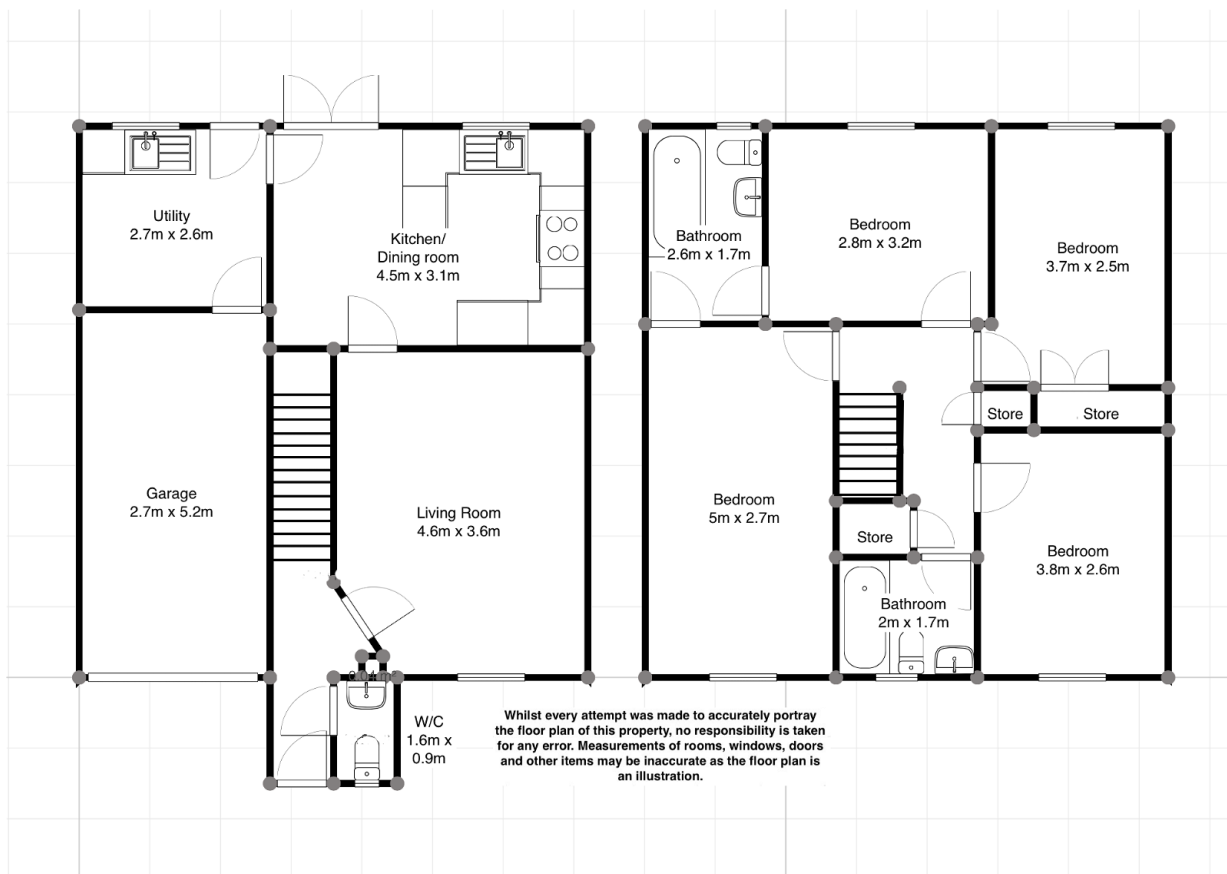
9 Coed Mawr, Ystrad Mynach

Offers Over £300,000

🛏️ 4 🪑 3 🚗 2



- PROPERTY REF: LC0723
- SOUGHT AFTER AREA OF YSTRAD MYNACH
- ADJOINING GARAGE
- EXCELLENT TRANSPORT LINKS
- OFF ROAD PARKING FOR TWO CARS
- 4 BEDROOM, SEMI DETACHED HOUSE
- CLOSE TO LOCAL AMENITIES
- LOVELY VIEWS OF SURROUNDING COUNTRYSIDE
- TWO FAMILY BATHROOMS AND DOWNSTAIRS W/C
- SET ON A QUIET, RESIDENTIAL ESTATE



QUOTE PROPERTY REF: LC0723

Must View! Beautifully Spacious 4 Bed Semi Detached Property in Ystrad Mynach. Lovely Views of Surrounding Countryside, Garage, Off Road Parking, Set on Quiet, Popular Residential Estate, Excellent Location and Transport Links. Read on for more details.