

Harcourt Close Development

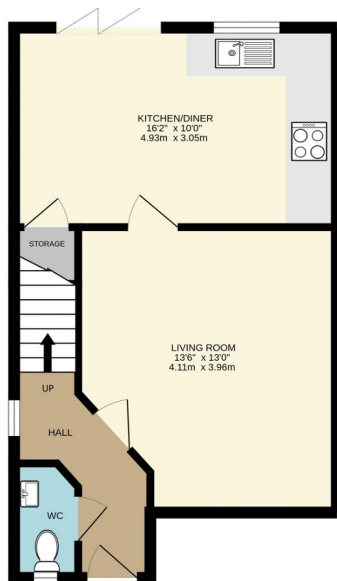
From £220,000

3 1 2

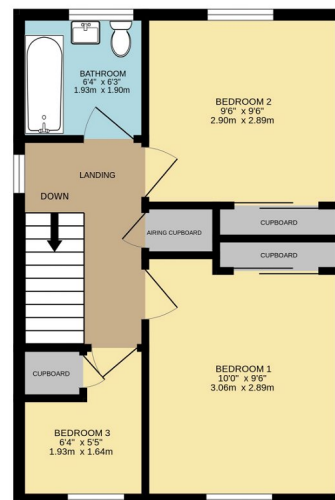


- Please Quote AR0614
- Bi-Folding doors in Kitchen
- Open Reach Ultra Fast Fibre Broadband
- 6 year Architects Certificate Guarantee
- Driveways Block Paved
- Fitted Kitchens with Bosch Appliances
- Mains Drainage
- Mixture of 28 x 3 bed Semi & 4 bed Detached Houses
- Timber Frame Construction
- Rointe Electric Radiators

GROUND FLOOR
415 sq.ft. (38.6 sq.m.) approx.



1ST FLOOR
393 sq.ft. (36.5 sq.m.) approx.



TOTAL FLOOR AREA: 808 sq.ft. (75.1 sq.m.) approx.

Whilst every attempt has been made to ensure the accuracy of the floorplan contained here, measurements of doors, windows, rooms and any other items are approximate and no responsibility is taken for any error, omission or mis-statement. This plan is for illustrative purposes only and should be used as such by any prospective purchaser. The services, systems and appliances shown have not been tested and no guarantee as to their operability or efficiency can be given.
Made with Metropix C2004

Quote Ref AR0614 Delighted to be the chosen selling agent for the prestigious Harcourt Close development in Hook.

This exciting new development consisting of 28 x 3 bedroom semi & 4 bedroom detached houses located in the sought after village location of Hook which offers a warm & welcoming community atmosphere.

Phase 1 which has already started offers 10 x 3 bedroom semi-detached houses whilst Phase 2 will offer 4 bedroom detached houses & further 3 bed semi-detached houses to complete the 28 units that are to finalise this select housing development.

Enjoy the convenience of a local shop & Hook Sports & Social club which is the hub of the village to bring locals together with many organised events . Don't miss your chance to secure one of these exceptional properties in this highly sought after development. Contact today to book your viewing & let us guide you towards your dream home.