



MELANIE ANDERSON POWERED BY **exp** TM UK

@ melanie.anderson@exp.uk.com

🌐 melanieanderson.exp.uk.com

☎ 01792 805 075



# Bishopston Road, Bishopston, Swansea, SA3 3EH

Offers In Region Of £500,000

🛏️ 4 🚗 2 🚗 2

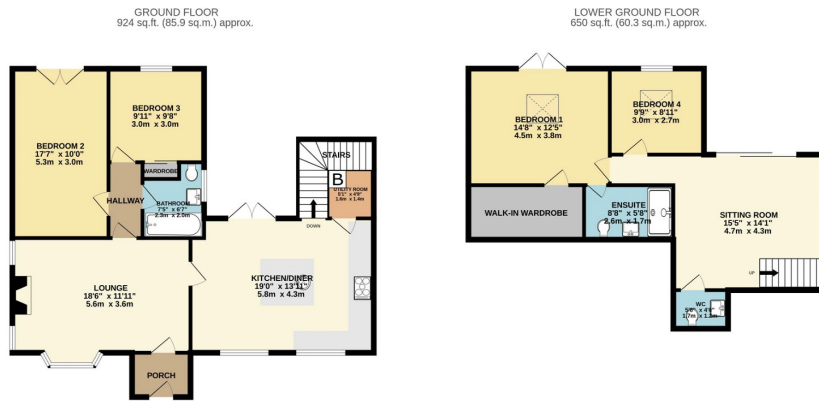


- Four Bedroom Semi-Detached Split Level Property
- Master Bedroom with Walk-in Wardrobe & En-suite
- Pleasant Views with Views over Bishopston Valley
- Within Catchment for Bishopston Comprehensive
- Off Road Parking for Multiple Vehicles
- Contemporary Open Plan Kitchen/Dining Room
- Two Reception Rooms & Utility Room
- Sought After Location in Award Winning Gower Peninsula
- Ideal Family Home
- Quote MA0143

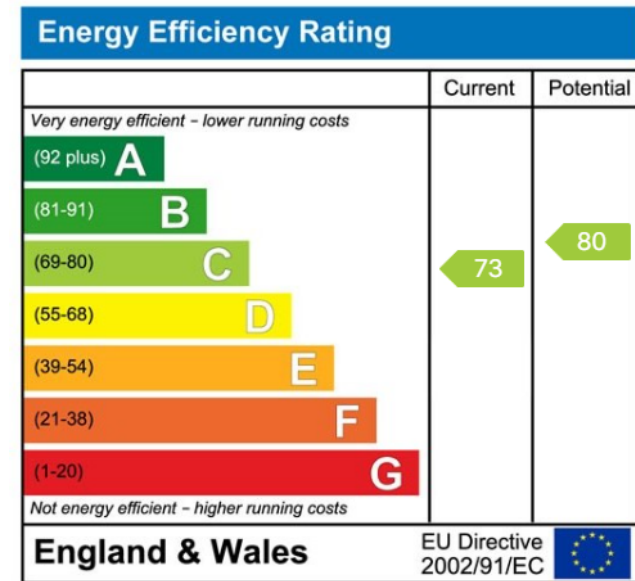




Beautifully presented four bedroom semi-detached property, situated in the sought after village of Bishopston. Benefitting from ample off-road parking, enclosed rear garden, open plan contemporary kitchen/dining room, two reception rooms, four spacious bedrooms and two bathrooms. The ground floor comprises; entrance porch, lounge, two bedrooms, bathroom, kitchen/diner with sit-out balcony, utility room and stairs down to lower ground floor. Lower ground floor comprises; sitting room, w/c, bedroom four and master bedroom featuring ensuite shower room and walk-in wardrobe. This property offers perfect accommodation for a family. Close to local primary and comprehensive schools. Nearby local amenities such as convenience shops, pubs, Pwll-Du Bay, post office and surf shop. Bishopston is located on the Gower Peninsula, UK's first ever Area of Outstanding Natural Beauty. Freehold.



While every attempt has been made to ensure the accuracy of the floorplan contained here, measurements of doors, windows, rooms and any other items are approximate and no responsibility is taken for any error, omission or mis-statement. This plan is for illustrative purposes only and should be used as such for any prospective purchase. The services, systems and appliances shown have not been tested and no guarantee as to their operability or efficiency can be given.  
Made with Memopix ©2021



eXp World UK Ltd is a registered company at Level 37, 25 Canada Square, London, E14 5LQ.

Registered company number is 12016573. VAT Registration Number is 327 4120 29