

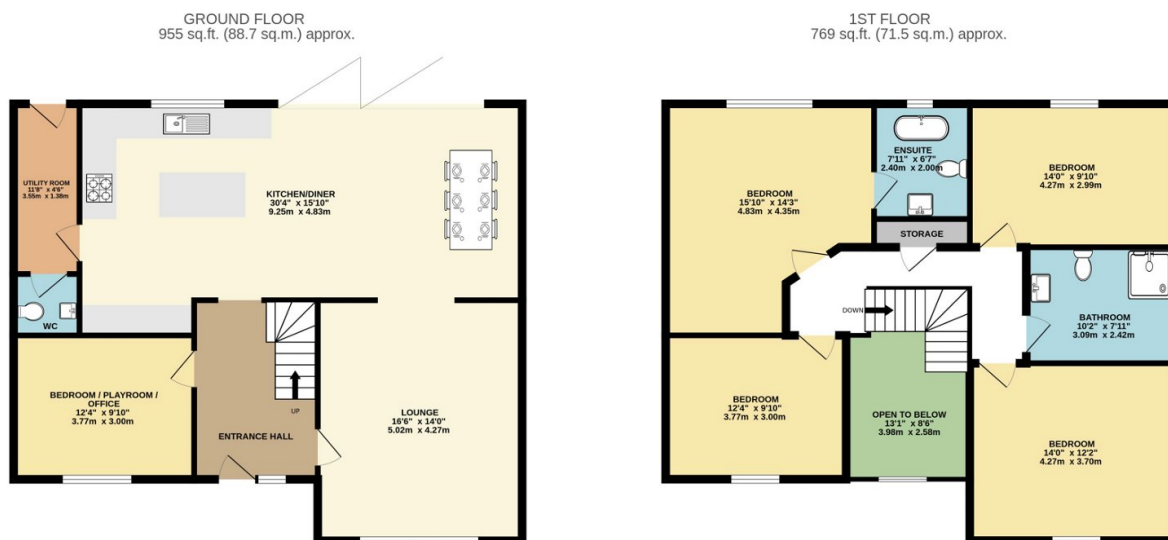
Highfields Johnston Haverfordwest Pems

Offers Over £450,000

🛏 5 🚿 2 🚗 3



- Quote Ref AR0614
- Far Reaching Countryside Views
- Underfloor Heating
- Gas Combi Boiler (Eco)
- Open Gallery Landing
- Detached 4/5 Bedroom House
- Anthracite Windows & Doors
- Bi- fold Kitchen Doors with Electronic Blinds
- Architects Cert
- Large Garden (Needs Landscaping)



TOTAL FLOOR AREA : 1724 sq.ft. (160.2 sq.m.) approx.
 Whilst every attempt has been made to ensure the accuracy of the floorplan contained here, measurements of doors, windows, rooms and any other items are approximate and no responsibility is taken for any error, omission or mis-statement. This plan is for illustrative purposes only and should be used as such by any prospective purchaser. The services, systems and appliances shown have not been tested and no guarantee as to their operability or efficiency can be given.
 Made with Metropix ©2023

Quote Ref AR01614 Welcome to the market Highfields a New build 4/5 bedroom detached family home with far reaching countryside views. A striking open plan lounge diner/kitchen area with bi-folding doors and remote control blinds that offer privacy when needed. Spacious bedrooms with en suite bathroom and main wet room are a true testament to the current owners attention to detail that has been added to this wonderful family home. Book your viewing today to appreciate what Highfields has to offer.