

Lower Rowe Court, Dobwalls, Liskeard, PL14 6BB

Guide Price £320,000

3 1 2



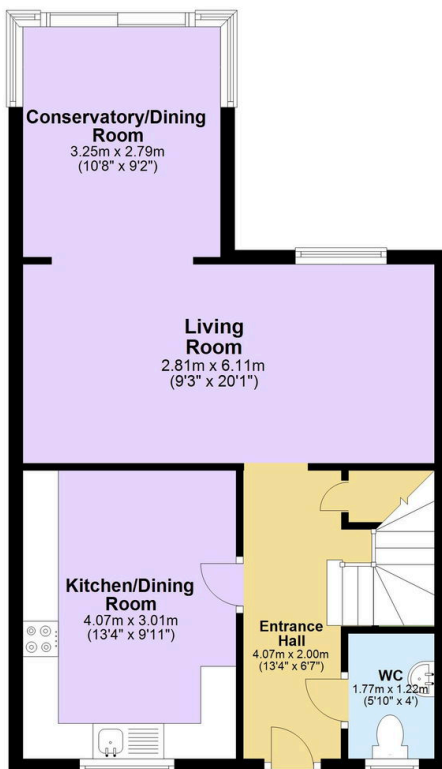
Step inside and be greeted by a warm and welcoming entrance hall. The spacious kitchen/diner has ample storage and is perfect for everyday cooking. The generously sized living room is light and airy with a fantastic built-in media wall. The added conservatory room serves as the true gathering place for family and friends, and impresses with its gorgeous feature log burner and bi-folding doors, along with electric blinds. Upstairs, you'll find a roomy landing with three double bedrooms that share a beautiful modern family bathroom. Outside, the property boasts a substantial plot with multiple seating areas and a lovely lawn, a true oasis that is completely secluded. Other highlights include off-road parking for 3-4 vehicles, detached outbuilding/office space, a handy spacious downstairs wc & more!

Key Features

- Freehold - Council Tax Band C - EPC C
- Three Double Bedrooms
- Modern Kitchen / Dining Room
- Downstairs WC
- Off-Road Parking For Three Vehicles
- Immaculately Presented Semi-Detached Home
- Gorgeous Conservatory With Bi-Folding Doors & Log Buner
- Spacious Living Room With Built-In Media Wall
- Handy Outbuilding/Office
- Generously Sized Rear Garden

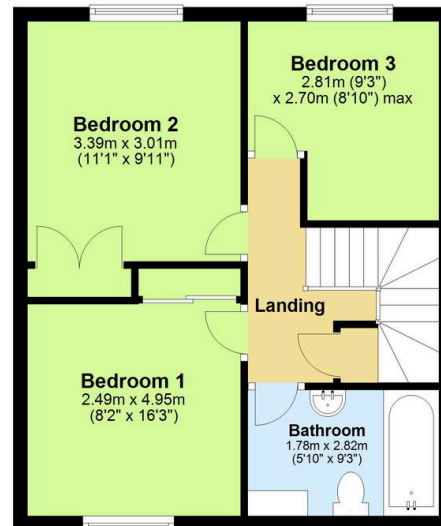
Ground Floor

Approx. 49.9 sq. metres (536.9 sq. feet)



First Floor

Approx. 46.3 sq. metres (498.3 sq. feet)



Total area: approx. 96.2 sq. metres (1035.1 sq. feet)