

Bonville Drive, Ivybridge

Offers Over £300,000

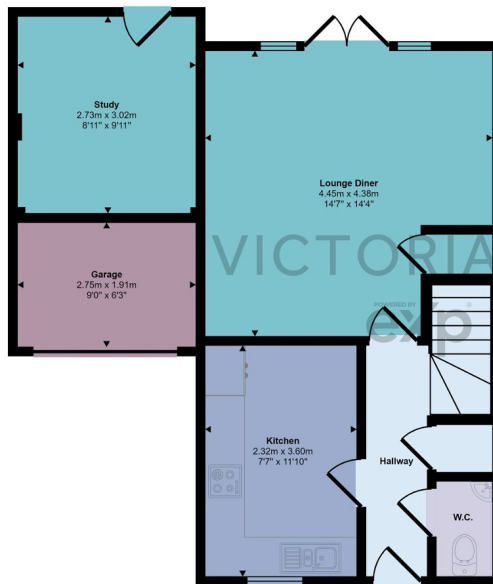
🛏️ 3 🚿 3 🚗 1



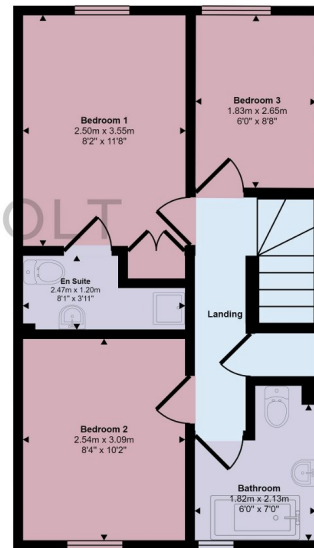
- Beautiful three-bedroom semi-detached family home
- Fully equipped kitchen
- Bright and spacious lounge/diner area
- Generous lawn and decking area
- Walking distance to Ivybridge town centre
- Downstairs WC
- Master bedroom with ensuite
- Driveway & partially converted garage
- Great connection to surrounding areas via A38
- Please Quote Ref VB0375 For All Enquiries



Approx Gross Internal Area
87 sq m / 938 sq ft



Ground Floor
Approx 51 sq m / 545 sq ft



First Floor
Approx 37 sq m / 393 sq ft

This floorplan is only for illustrative purposes and is not to scale. Measurements of rooms, doors, windows, and any items are approximate and no responsibility is taken for any error, omission or mis-statement. Icons of items such as bathroom suites are representations only and may not look like the real items. Made with Made Snappy 360.

Please Quote Ref VB0375 For All Enquiries. Presenting to the market this beautiful three-bedroom semi-detached family home, nestled in the heart of a five year old development. This property benefits from driveway parking, partially converted garage and a generous back garden.