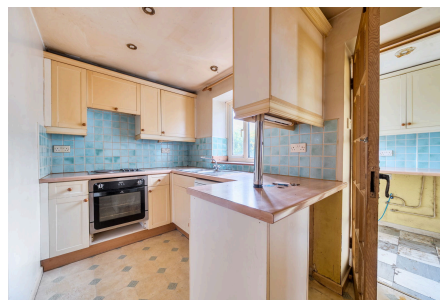


## Ashburton Square, Callington, PL17

Guide Price £130,000

3 1 2



A spacious three-bedroom cottage located in the heart of Callington, just moments from the town's local amenities. Requiring modernisation throughout, the property presents an excellent opportunity for first-time buyers, investors or those seeking a renovation project. Offered to the market with no onward chain, the property further benefits from off-road parking for one vehicle and a small courtyard garden.

Callington is a charming Cornish town set within a prime position in South East Cornwall, approximately 15 miles from Plymouth city centre.

## Key Features

- TO ARRANGE A VIEWING PLEASE QUOTE BL0650
- No Onward Chain
- Off-Road Parking
- Reception Room With Wood Burning Stove
- Kitchen & Separate Utility Room
- Three Bedroom Cottage
- Requires Modernisation Throughout
- Town Centre Location
- Dining Room
- Freehold

