



ZAFER CETINEL

POWERED BY
exp™
UK

@ zafer.cetinel@exp.uk.com

zafercetinel.exp.uk.com

01242 374 844

8 Sinope Street, £175,000

🛏 2 🍽 1 🛋 1

- CITY CENTRE IN GLOUCESTER
- TWO DOUBLE BEDROOMS
- GARDEN
- CHAIN FREE
- DOUBLE GLAZED AND GAS FIRE CENTRAL HEATING
- WALKING DISTANCE TO BUSY BARTON STREET
- RESIDENTS PARKING AND CAR PARK NEAR BY
- OPEN PLAN LOUNGE / DINER
- GOOD CONDITION
- REF ZAFER CETINEL

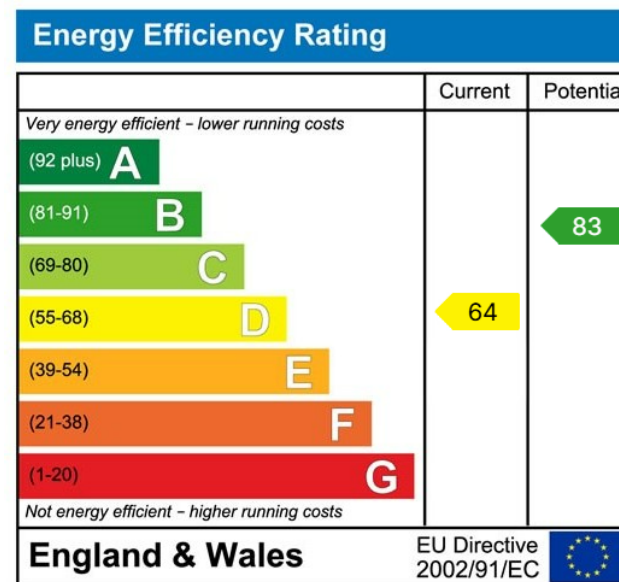
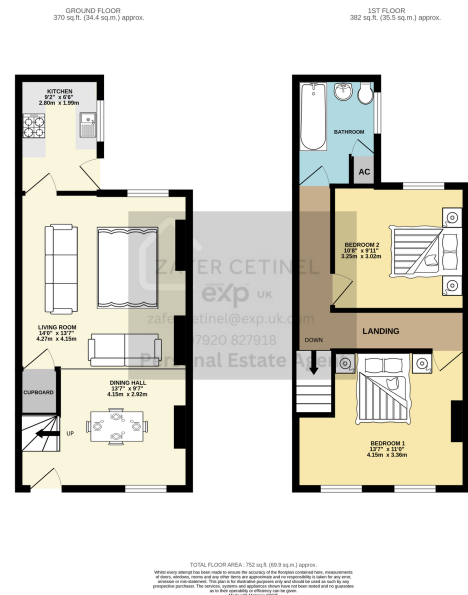
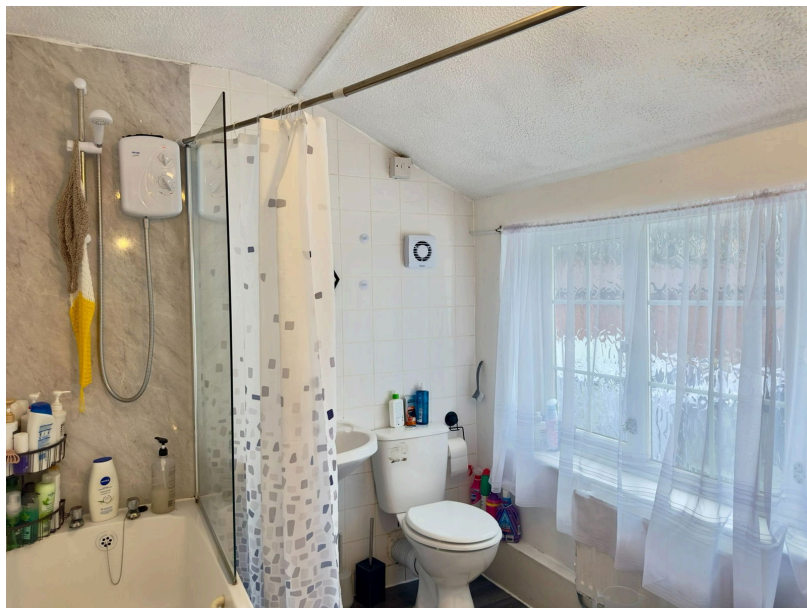


Period mid-terrace property in the heart of Gloucester, just off busy Barton Street and within walking distance of local shops and the city centre.

Ground floor: spacious open-plan lounge/dining room and a fitted kitchen. First floor: two double bedrooms and a family bathroom. Further benefits include double glazing, gas-fired central heating and a good-size rear garden.

Chain free and ready to move into — ideal for first-time buyers or buy-to-let investors.





eXp World UK Ltd is a registered company at Level 37, 25 Canada Square, London, E14 5LQ.
Registered company number is 12016573. VAT Registration Number is 327 4120 29