



ZAFER CETINEL

POWERED BY
expTM UK

@ zafer.cetinel@exp.uk.com

zafercetinel.exp.uk.com

01242 374 844

Lansdown Place, Cheltenham, GL50 2HX

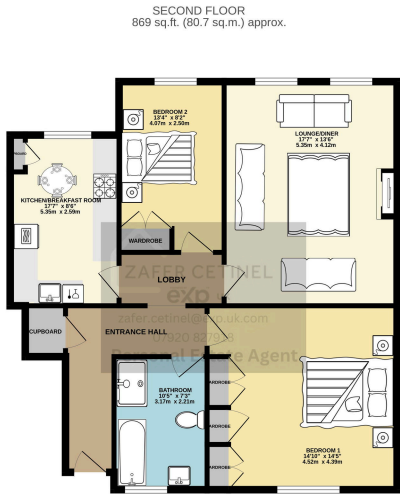
£375,000

🛏 2 🍳 1 🛋 1

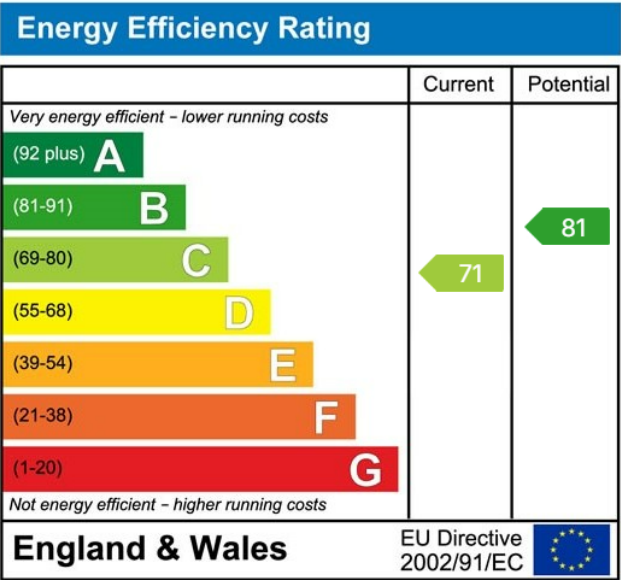


Spacious period apartment with a generous entrance hall, large living room with high ceilings, restored sash windows, antique oak parquet and bespoke mantle concealing broadband and power points. Immaculate kitchen with integrated appliances, reclaimed oak flooring and built-in storage. Luxurious four-piece bathroom with underfloor heating, Mandarin Stone tiles and premium fittings, plus a walk-in thermostatic shower. Two well-proportioned bedrooms with restored period details and built-in wardrobes. Upgraded heating system (Viessmann boiler, magnetic filtration, Stelrad radiators, TRV4 valves) and Nest thermostat. On-street parking and a charming communal front garden.





TOTAL FLOOR AREA: 869 sq.ft. (80.7 sq.m.) approx.
 Whilst every attempt has been made to ensure the accuracy of the floor plan, the agent does not accept any liability for errors or omissions. The agent does not accept any liability for errors or omissions. The agent does not accept any liability for errors or omissions.



eXp World UK Ltd is a registered company at Level 37, 25 Canada Square, London, E14 5LQ.
 Registered company number is 12016573. VAT Registration Number is 327 4120 29