



ZAFER CETINEL

POWERED BY
expTM UK

@ zafer.cetinel@exp.uk.com

zafercetinel.exp.uk.com

01242 374 844

41 Harvest Street, Offers Over £450,000

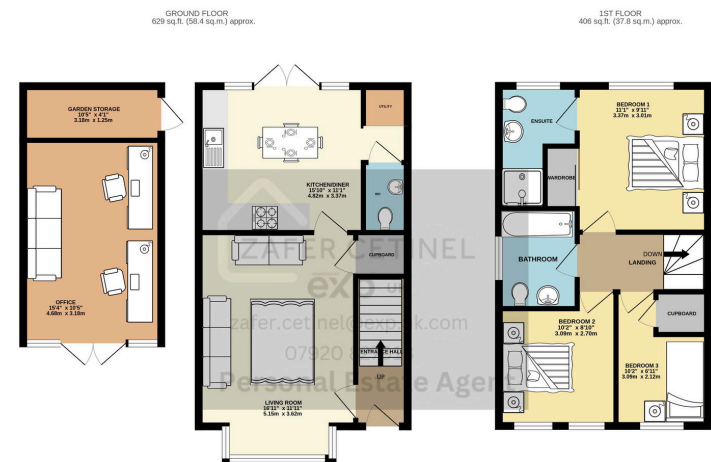
3 2 2

- HARVEST STREET, PRESTBURY, CHELTENHAM
- IMMACULATE MODERN HOME
- WALKING DISTANCE TO PRESTBURY VILLAGE, PITTVILLE, RACE COURSE AND PARKS
- ENCLOSED SOUTHERLY FACING GARDEN
- ~~AND CAN BE~~ CONVERSION INTO A AMAZING OFFICE WITH UNDER FLOOR HEATING
- KITCHEN / DINING ROOM with a SEPARATE UTILITY AREA
- GREAT SCHOOLS CATCHMENTS FOR ALL AGES
- TUCKED AWAY IN A QUITE CUL DE SAC
- EV CHARGER AND DRIVEWAY FOR NUMBER OF CARS
- REF ZAFER CETINEL



This property was built in 2018 by the reputable builder Bloor Homes, and it is of an amazing standard. It is in the highly sought-after area of Prestbury, which offers a perfect blend of village life and town center amenities. The development is particularly ideal for families with young children, as there are secure and lovely playing parks just around the corner. Additionally, it is conveniently close to shops, pubs, local surgeries, a library, and coffee shops.

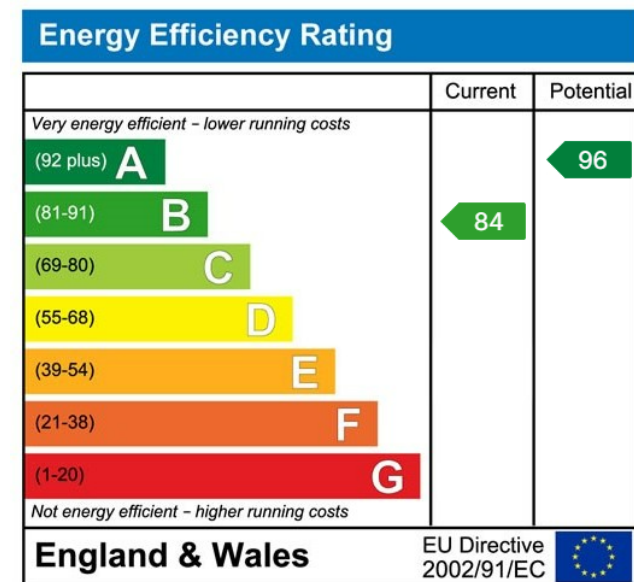




TOTAL FLOOR AREA: 1035 sq.ft. (96.2 sq.m.) approx.

Whilst every attempt has been made to ensure the accuracy of the floorplan contained herein, measurements of rooms, windows, doors and any other items are approximate and no responsibility is taken for any omission or mis-statement. This plan is for illustrative purposes only and should be used as such by any prospective purchaser. The services, systems and appliances shown have not been tested and no guarantee as to their operability or efficiency can be given.

Made with Metreplan (2002).



eXp World UK Ltd is a registered company at Level 37, 25 Canada Square, London, E14 5LQ.
Registered company number is 12016573. VAT Registration Number is 327 4120 29