

## Callington Road, Saltash, PL12 6DZ

Guide Price £495,999

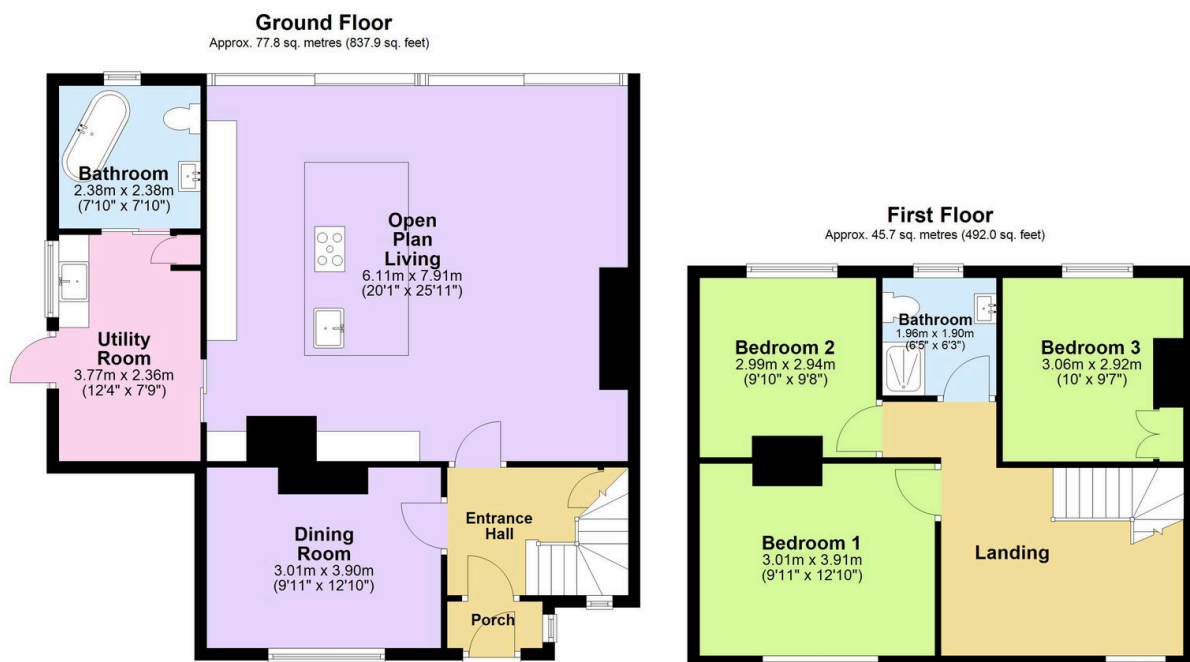
3 2 2



Upon entering through the welcoming porch, you're greeted by a spacious hallway that immediately draws your attention to the heart of this remarkable home. The stunning open-plan living space forms the centerpiece, featuring a comfortable living area complete with a characterful log burner that creates the perfect cosy atmosphere for relaxing evenings. The kitchen is nothing short of spectacular – a sleek, contemporary space fitted with premium built-in appliances including a double oven, complemented by modern conveniences such as an instant hot water tap and a dedicated coffee station. The stylish island with breakfast bar provides the ideal spot for casual dining and socialising. Natural light floods the space through carefully positioned skylights.

## Key Features

- Freehold - Council Tax Band D - EPC TBC
- Stunning Open-Plan Living Space
- Three Double Bedrooms
- South-Facing Garden
- Separate Dining Room
- Utility Room
- Two Bathrooms
- Sleek Kitchen With Island
- Ample Off-Road Parking
- Quote BH0675 To Book Your Viewing



Total area: approx. 123.6 sq. metres (1329.9 sq. feet)