



ZAFER CETINEL


POWERED BY
exp™
UK

@ zafer.cetinel@exp.uk.com

zafercetinel.exp.uk.com

01242 374 844

162 Gloucester Road,
£400,000

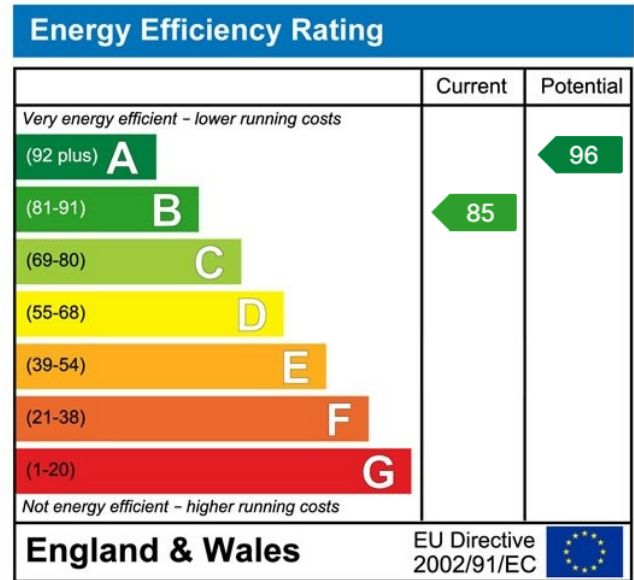
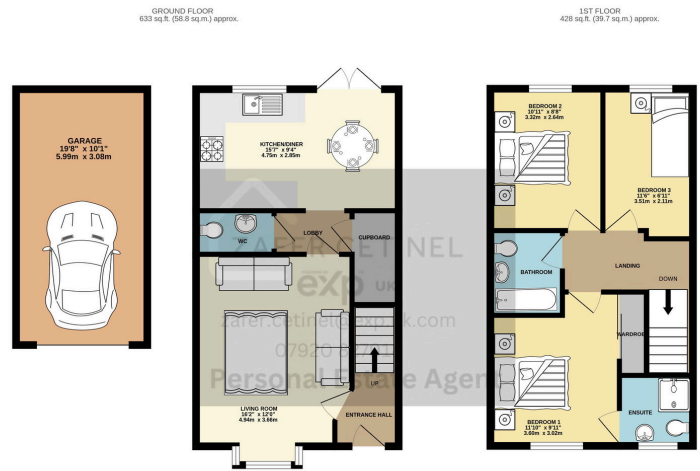
 3  2  1

- GLOUCESTER ROAD, CHELTENHAM
- DOWN THE ROAD FROM TOWN CENTRE AND ALL THE SHOPS
- LARGE SINGLE GARAGE AND DRIVEWAY FOR TWO CARS
- KITCHEN / DINER WITH ALL INTEGRATED APPLIANCES
- BRILLIANT TRANSPORT LINKS TO GLOUCESTER, M5 SOUTH AND NORTH
- SHORT WALKING DISTANCE TO TRAIN STATION
- THREE BEDROOM MODERN HOME WITH TWO BATHROOMS
- LOW MAINTENANCE REAR GARDEN
- GREAT SCHOOLS FOR ALL AGES
- REF ZAFER CETINEL



Discover this stunning semi-detached home, built in 2017 by award-winning Taylor Wimpey, ideally located at the edge of Cheltenham town centre, near Christchurch. Just a short walk from Cheltenham Spa train station and local amenities, this property combines convenience with contemporary living. The ground floor features an inviting entrance hall, a spacious living room with a bay window, a downstairs toilet, and a modern kitchen/diner equipped with integrated appliances and double patio doors leading to a private, low-maintenance garden. Upstairs, you'll find a generous landing, a master bedroom with an en-suite shower room, two additional bedrooms, and a family bathroom. The exterior includes a side gate, a larger-than-average single garage, and a driveway for two cars.





eXp World UK Ltd is a registered company at Level 37, 25 Canada Square, London, E14 5LQ.
 Registered company number is 12016573. VAT Registration Number is 327 4120 29