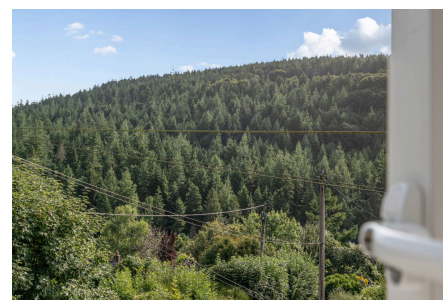


Under Road, Gunnislake, PL18

Guide Price £250,000

2 1 1



A bright and spacious two-bedroom semi-detached home set on a generous plot in the popular village of Gunnislake. Enjoying stunning views across the Tamar Valley, this well-proportioned property features a south-facing garden, a garage, and no onward chain.

The property is located in the heart of Gunnislake, within easy reach of neighbouring villages St Ann's Chapel and Drakewalls. Local amenities include a convenience store, post office, doctor's surgery, primary school, pubs, and a train station with regular services to and from Plymouth. The surrounding area offers numerous scenic countryside walks, with Cotehele House and Estate, Kit Hill, and the River Tamar all nearby.

Key Features

- TO ARRANGE A VIEWING PLEASE QUOTE BL0650
- Two Double Bedrooms
- Garage
- South Facing Garden & Patio
- Contemporary Family Bathroom
- Semi-Detached
- No Onward Chain
- Generous-Sized Plot
- Views Over The Tamar Valley
- Popular Village Location

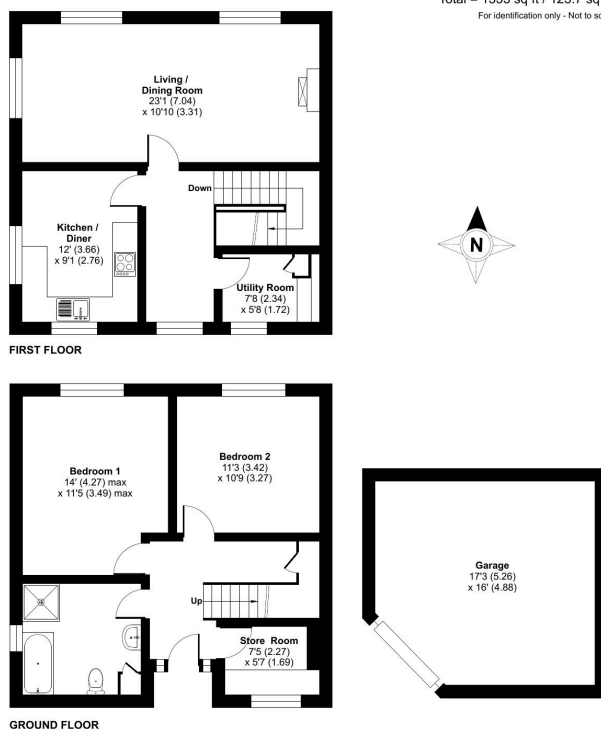
Under Road, Gunnislake, PL18

Approximate Area = 1073 sq ft / 99.6 sq m

Garage = 260 sq ft / 24.1 sq m

Total = 1333 sq ft / 123.7 sq m

For identification only - Not to scale



Floor plan produced in accordance with RICS Property Measurement Standards incorporating International Property Measurement Standards (IPMS2 Residential). © richcom 2025. Produced for Ben Estates TA Ben Langton Powered By exp. REF: 133226