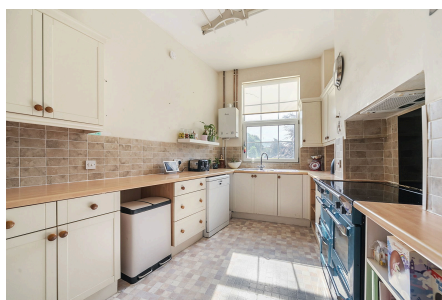


## Bay Tree Hill, Liskeard, PL14

Guide Price £375,000

4 1 3



Wesley House is a beautifully proportioned and characterful townhouse, offering a wealth of period features and flexible living space across three generous floors. Thoughtfully arranged and full of charm, this historic home provides 2,818 sq ft of versatile accommodation, making it ideal for families, those seeking multi-generational living, or buyers interested in creating a self-contained annexe. Located just a short walk from Liskeard town centre, the property perfectly balances historic appeal with everyday convenience.

## Key Features

- TO ARRANGE A VIEWING PLEASE QUOTE BL0650
- Four Double Bedrooms
- Driveway & Garage
- Three Receptions Rooms
- Close To Town Centre, Train Station & Ammenities
- Characterful Townhouse
- 2,818 Sqft Of Accomodation
- Front & Rear Gardens
- Basement Rooms With Potential
- Freehold

### Bay Tree Hill, Liskeard, PL14

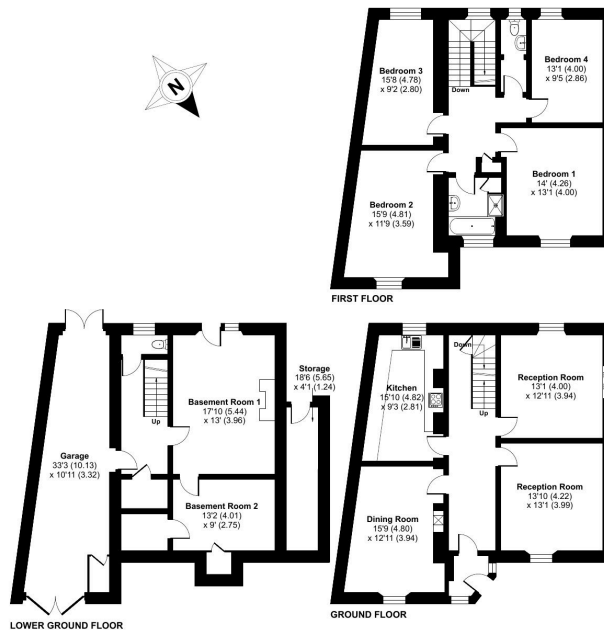
Approximate Area = 2449 sq ft / 227.5 sq m

Garage = 294 sq ft / 27.3 sq m

Outbuilding = 75 sq ft / 6.9 sq m

Total = 2818 sq ft / 261.7 sq m

For identification only - Not to scale



Floor plan produced in accordance with RICS Property Measurement Standards incorporating International Property Measurement Standards (IPMS2 Residential). © richcom 2025. Produced for Ben Estates TA Ben Langton Powered By esp. REF: 1315147