

33 Lincoln Avenue,

Guide Price £245,000

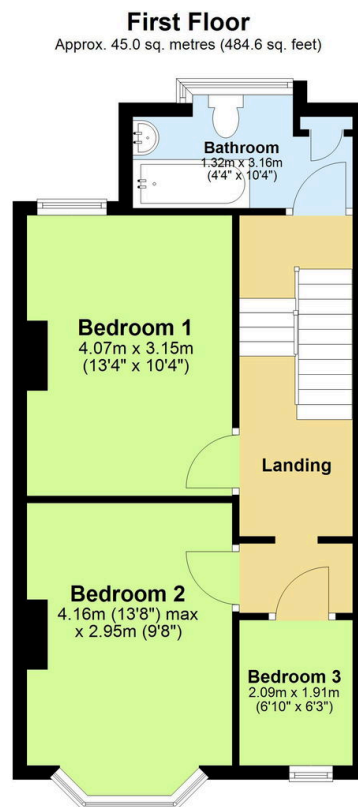
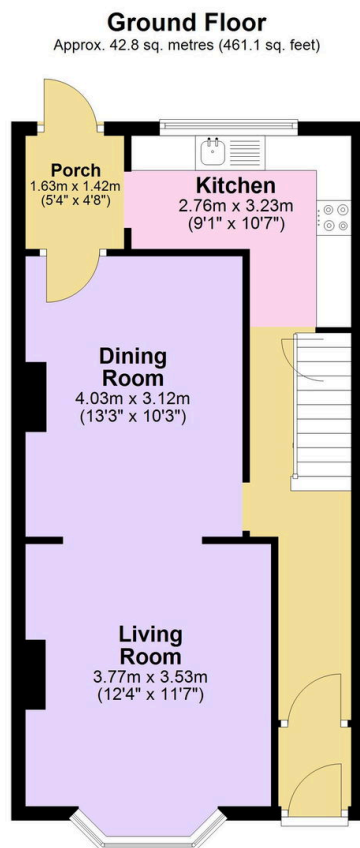
3 1 2



A truly captivating period property showcasing beautiful red brick character in the heart of Lipson. From the moment you step through the front door, you'll be enchanted by the lovely entrance hall featuring original tiles and gorgeous coving that continues throughout the property - authentic period details that add timeless charm to every room. The spacious living room is a true showstopper with its elegant bay window flooding the space with natural light and an impressive feature fireplace creating a stunning focal point. The accommodation flows beautifully into the dining area, perfect for both everyday family meals and entertaining guests. The modern fitted kitchen comes complete with built-in appliances, offering contemporary functionality within this period setting.

Key Features

- Freehold - Council Tax Band B - EPC D
- Beautiful Terrace Period Property
- Three Well-Proportioned Bedrooms
- Spacious Living Room With Bay Window & Feature Fireplace
- Gorgeous Dining Room
- Modern Fitted Kitchen
- Family Bathroom
- Original Features Throughout
- Sunny Rear Courtyard
- Quote BH0675 To Book Your Viewing



Total area: approx. 87.9 sq. metres (945.7 sq. feet)