



DOMINIC DORE

exp[®] UK

@ dominic.dore@exp.uk.com

dominicro.exp.uk.com

07359 989 128 / 01242 293 892

Polefield House, Hatherley Road, Cheltenham, GL51

Guide Price £375,000

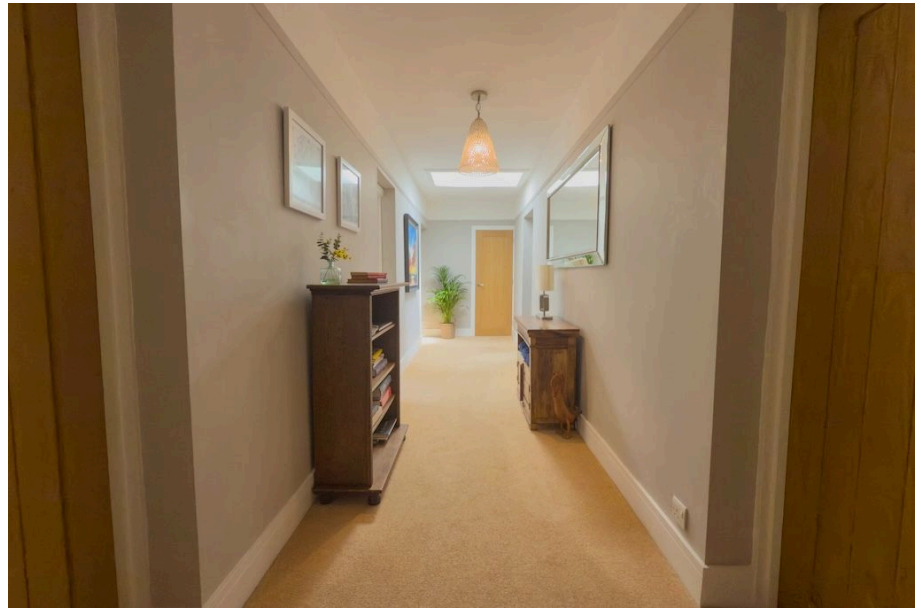
3 1 1

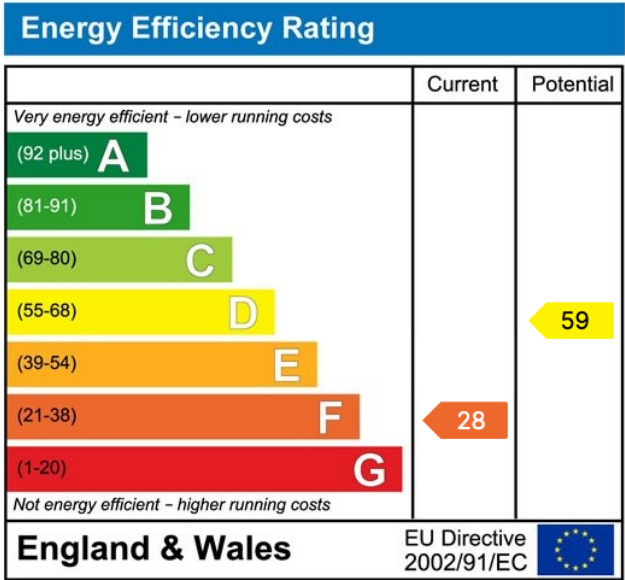
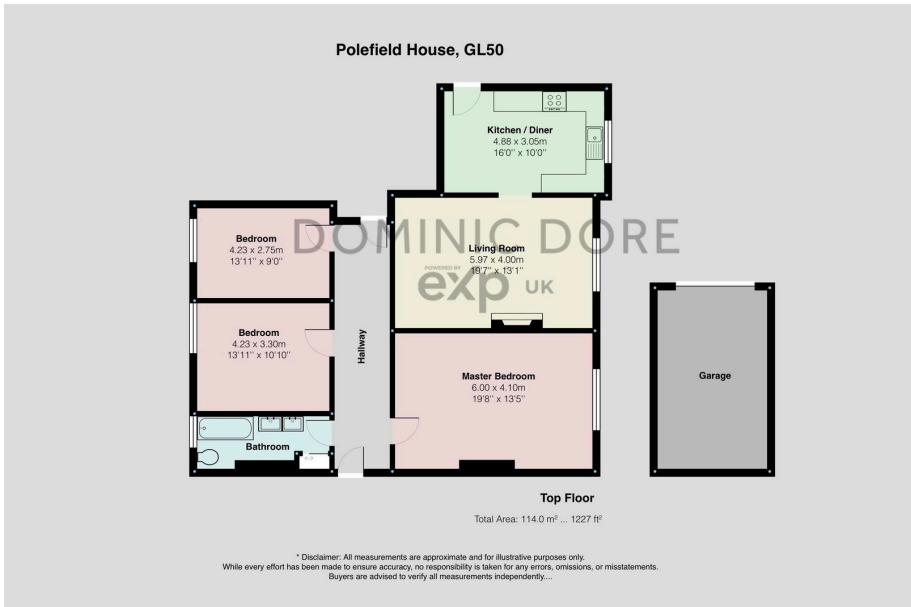
- Exceptional Penthouse Apartment
- Share of Freehold
- Fully fitted contemporary kitchen/diner
- Garage and off-street parking for two cars
- EPC Rating: F28 (Pre Renovation)
- High-spec refurbishment with attention to detail throughout
- Three spacious double bedrooms
- 1,227 sq ft (excluding garage)
- Excellent built-in storage throughout
- REF: DD1204 DOMINIC DORE



Ref: DD 1204.

I'm delighted to offer to the market this luxurious penthouse in a prime Cheltenham location. Set within the prestigious South Wing of a converted manor house on Hatherley Road, this exceptional three-bedroom top-floor apartment offers a rare blend of timeless character and high-spec contemporary living. Situated in the heart of Cheltenham, the apartment is within easy reach of the vibrant town centre and the stylish Montpellier district, known for its boutique shops, cafés, and restaurants. Cheltenham Spa train station is just a short stroll away, offering direct links to London, Bristol, and Birmingham. With excellent access to the A40 and M5, the location is ideal for commuters.





eXp World UK Ltd is a registered company at Corporation Service Company (UK) Limited, 5 Churchill Place, 10th Floor, London, United Kingdom, E14 5HU. Registered company number is 12016573. VAT Registration Number is 327 4120 29