

Deacon Drive, Saltash

Guide Price £500,000

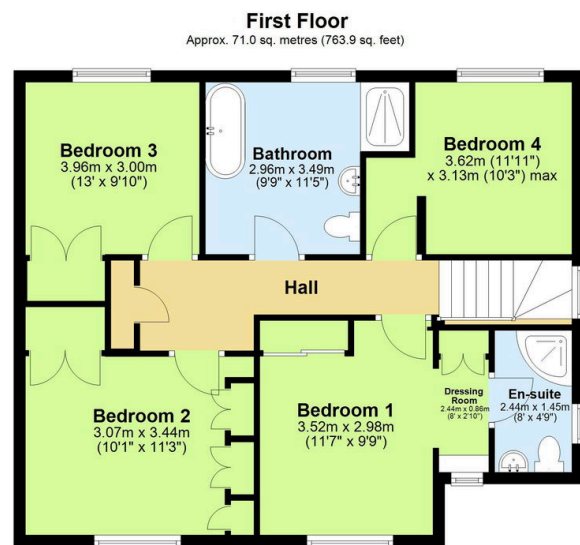
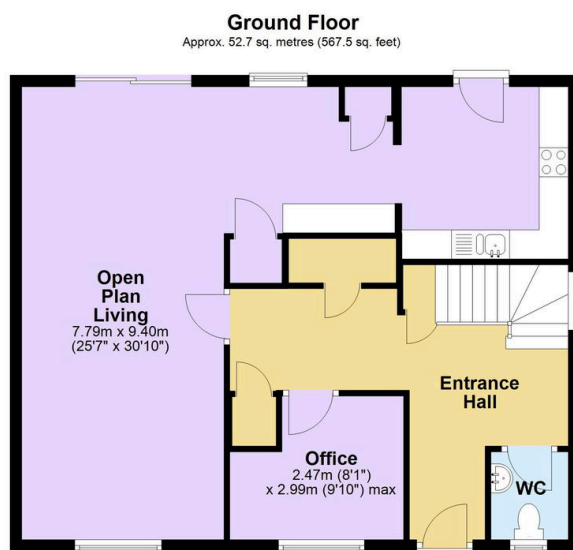
4 2 1



Discover this truly exceptional detached family home, positioned on an elevated plot offering breath-taking panoramic views across the River Tamar. This immaculate property seamlessly combines contemporary living with practical family accommodation, all whilst enjoying the tranquillity of a private cul-de-sac location. Step into the spacious entrance hallway that sets the tone for this remarkable home, featuring ample built-in storage cupboards and a convenient utility cupboard that maximizes both functionality and first impressions. A downstairs WC adds practical convenience for family living and entertaining, whilst the downstairs office provides the perfect space for remote working or quiet study.

Key Features

- Freehold - Council Tax Band E - EPC C
- Four Double Bedrooms
- Breathtaking River Views
- Fabulous En-suite Bathroom & Dressing Room
- Elevated Enclosed Garden
- Impressive Detached Home
- Double Garage & Driveway Parking
- Stunning Open-Plan Living Space
- Downstairs Study
- No Onward Chain Quote BH0675 To Book Your Viewing



Total area: approx. 123.7 sq. metres (1331.5 sq. feet)