

## Deacon Drive, Saltash

Guide Price £500,000

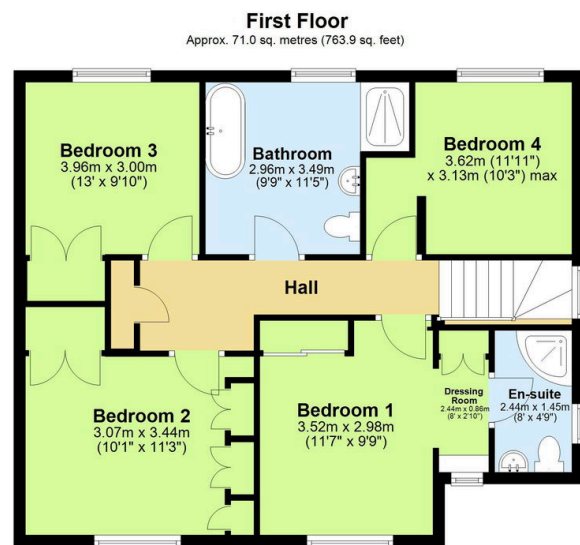
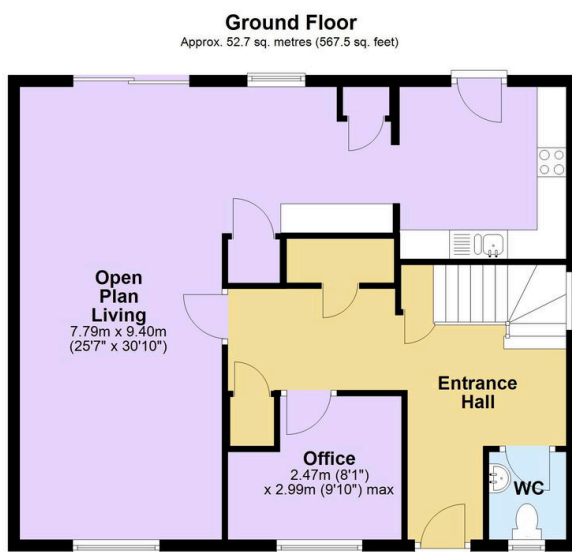
4 2 1



This immaculate property seamlessly combines contemporary living with practical family accommodation, all whilst enjoying the tranquillity of a private cul-de-sac location. Step into the spacious entrance hallway that sets the tone for this remarkable home, featuring ample built-in storage cupboards and a convenient utility cupboard that maximizes both functionality and first impressions. A downstairs WC adds practical convenience for family living and entertaining, whilst the downstairs office provides the perfect space for remote working or quiet study. The heart of this home reveals itself through the spectacular open plan living area, where every element has been carefully designed to maximize both the river views and family connectivity.

## Key Features

- Freehold - Council Tax Band E - EPC C
- Four Double Bedrooms
- Breathtaking River Views
- Fabulous En-suite Bathroom & Dressing Room
- Elevated Enclosed Garden
- Impressive Detached Home
- Double Garage & Driveway Parking
- Stunning Open-Plan Living Space
- Downstairs Study
- Quote BH0675 To Book Your Viewing



Total area: approx. 123.7 sq. metres (1331.5 sq. feet)