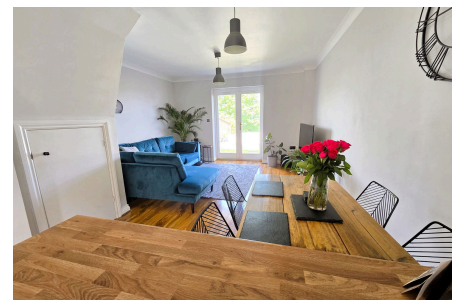


Bishops Close, Saltash, PL12 6HP

Guide Price £230,000

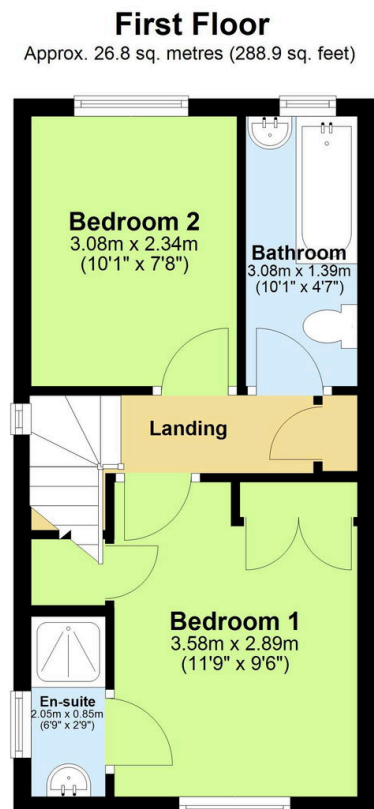
2 2 1



This immaculately presented home offers thoughtful design, superb living spaces, and breathtaking views. The accommodation includes a generous master bedroom providing ample space and comfort, enhanced by its own ensuite shower room. The second well-proportioned double bedroom boasts the property's crowning glory - spectacular, far-reaching views across the tranquil river and rolling countryside beyond, allowing you to wake up to nature's ever-changing canvas right outside your window. On the ground floor, a practical and convenient WC, a modern fitted kitchen with a charming hatch connects the kitchen to the spacious lounge/ diner, perfect for entertaining while preparing meals and maintaining conversation with family or guests.

Key Features

- Freehold - Council Tax Band C - EPC C
- Two Double Bedrooms
- Modern Fitted Kitchen
- En-suite Shower Room
- Driveway Parking For Two Vehicles
- Beautiful Semi-Detached Home
- Spacious Living Room & Diner
- Stunning River & Countryside Views
- Private Enclosed Rear Garden
- Quote BH0675 To Book Your Viewing



Total area: approx. 55.8 sq. metres (600.3 sq. feet)