



ZAFER CETINEL POWERED BY **exp** TM UK

@ zafer.cetinel@exp.uk.com

zafercetinel.exp.uk.com

01242 374 844

68 Harvest Street,

£470,000

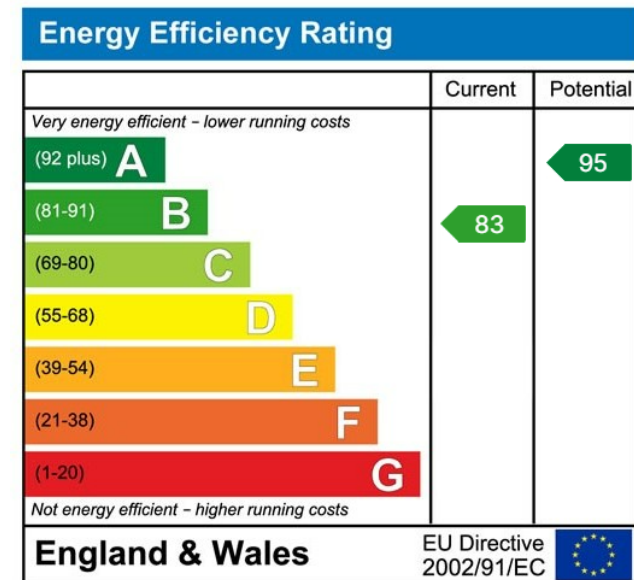
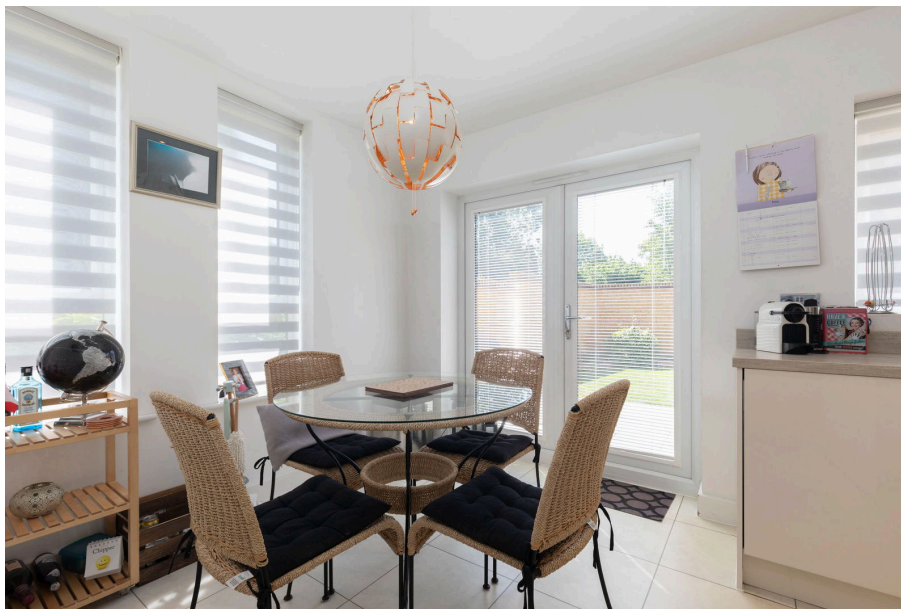
3 2 1

- HARVEST STREET, PRESTBURY, CHELTENHAM
- WALKING DISTANCE TO PRESTBURY VILLAGE, PITTVILLE, RACE COURSE AND TRAINS
- LARGE SINGLE GARAGE AND DRIVEWAY FOR TWO CARS
- GREAT SCHOOLS CATCHMENTS FOR ALL AGES
- GREAT ACCESS TO TOWN AND BRILLIANT FANTASTIC TRANSPORT LINKS
- DETACHED and IMMACULATE MODERN HOME
- THREE BEDROOM, TWO BATHROOM and KITCHEN / DINING ROOM
- WALLED and ENCLOSED SOUTHERLY FACING GARDEN
- TUCKED AWAY AS A CORNER PLOT PART OF A QUITE CUL DE SAC
- REF ZAFER CETINEL



This property was built in 2018 by the reputable builder Bloor Homes, and it is of an amazing standard. It is in the highly sought-after area of Prestbury, which offers a perfect blend of village life and town center amenities. The development is particularly ideal for families with young children, as there are secure and lovely playing parks just around the corner. Additionally, it is conveniently close to shops, pubs, local surgeries, a library, and coffee shops.





eXp World UK Ltd is a registered company at Level 37, 25 Canada Square, London, E14 5LQ.
 Registered company number is 12016573. VAT Registration Number is 327 4120 29