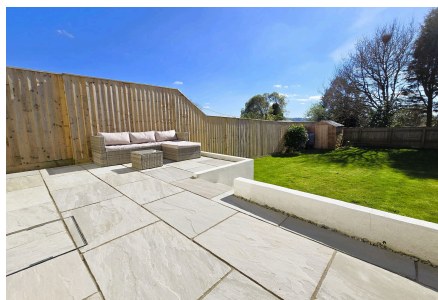


## Pillaton, Saltash, PL12 6QS

Guide Price £390,000

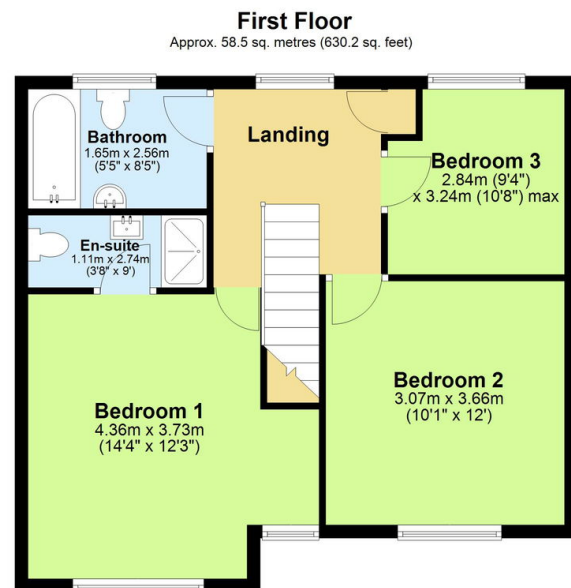
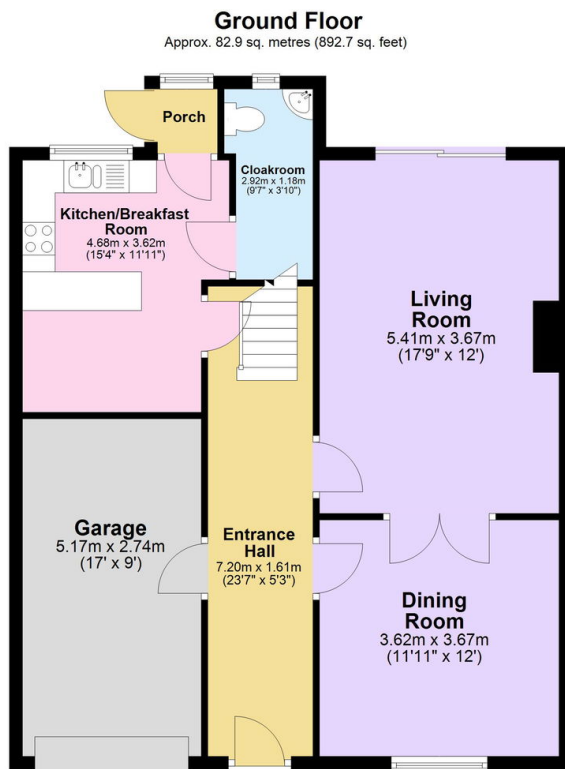
3 2 2



Upon entering, you'll be greeted by a wonderful spacious entrance hall, setting the tone for this thoughtfully designed family home. The gorgeous living room features a characterful log burner as its focal point, while patio doors flow seamlessly out to the garden, flooding the space with natural light. Double doors lead through to the separate dining room, perfect for formal entertaining or family gatherings. The modern kitchen/breakfast room offers ample storage and workspace, complemented by a handy utility room and cloakroom. Upstairs, the property boasts three generously sized bedrooms, all enjoying far-reaching views across the picturesque Cornish landscape.

## Key Features

- Freehold - Council Tax Band D - EPC TBC
- Three Generously Sized Bedrooms
- Separate Dining Room
- Handy Utility / Cloakroom
- Off-Road Parking & Garage
- Immaculately Presented Semi-Detached Home
- Gorgeous Living Room With Log Burner
- Modern Kitchen / Breakfast Room
- Fantastic South-Facing Rear Garden
- Quote BH0675 To Book Your Viewing



Total area: approx. 141.5 sq. metres (1522.9 sq. feet)