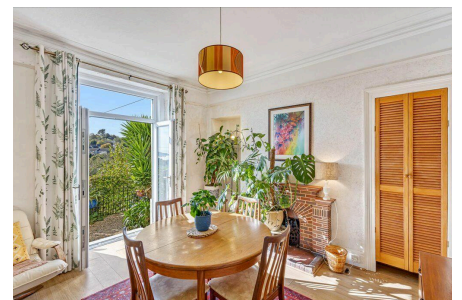


18 Lower Port View,

Guide Price £450,000

5 2 3



Nestled on the prestigious Lower Port View road, this immaculate period property combines timeless elegance with contemporary comfort. The home commands breathtaking river vistas while offering exceptional living spaces both inside and out. Upon arrival, a practical porch entrance welcomes you into a spacious hallway that sets the tone for this remarkable residence. The ground floor boasts three magnificent reception rooms, each with its own distinct character and purpose. The principal living room features a stunning bay window that frames the picturesque surroundings. Adjacent is a versatile dining room that could easily function as a cosy snug or home office. Gorgeous patio doors in this space showcase the wonderful views and provide seamless access to the south-facing front garden.

Key Features

- Freehold - Council Tax Band E - EPC E
- Three Reception Rooms
- Wonderful South Facing Gardens
- Garage & Plenty Of On Road Parking
- Sought After Road!
- Impressive 5 Bedroom Period Property
- Family Bathroom & Downstairs Shower Room
- Handy Porch Entrance
- Stunning River & Countryside Views
- Quote BH0675 To Book Your Viewing



Total area: approx. 180.6 sq. metres (1943.7 sq. feet)