



DARYL HILL POWERED BY exp TM UK

@ daryl.hill@exp.uk.com

🌐 darylhill.exp.uk.com

☎ 07921 060 390

14 Sidney Street, Gloucester, GL1 4DB

£230,000

🛏 3 🚿 1 🚗 1



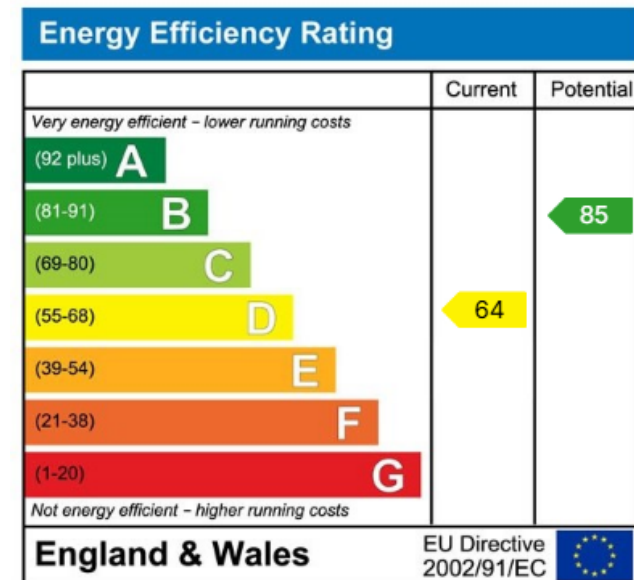
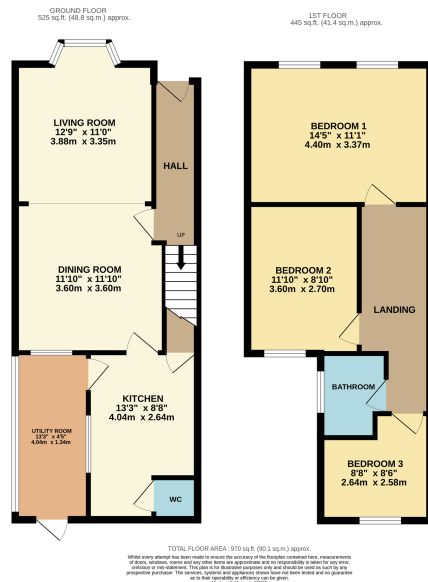
- PERIOD END OF TERRACE
- THREE BEDROOMS
- BATHROOM AND WC
- BAY FRONTED LOUNGE DINER
- SOUTH FACING REAR GARDEN
- UTILITY ROOM
- CLOSE TO ROYAL HOSPITAL
- CHAIN FREE SALE
- WELL PRESENTED THROUGHOUT
- REF DH0109



Ref DH0109: A well presented, three bed end of terrace set within walking distance of the City centre and the Royal Hospital. This location makes this home an ideal first time buy, family purchase or investment opportunity.

The accommodation consists of 3 bedrooms and a first floor bathroom, a bay fronted lounge/diner, fitted kitchen, WC and utility. To the rear there is a south facing garden with gated side access.

The property is offered for sale chain free.



eXp World UK Ltd is a registered company at Level 37, 25 Canada Square, London, E14 5LQ.

Registered company number is 12016573. VAT Registration Number is 327 4120 29