

## 1 Ashburgh Parc, Latchbrook

Guide Price £410,000

4 2 2



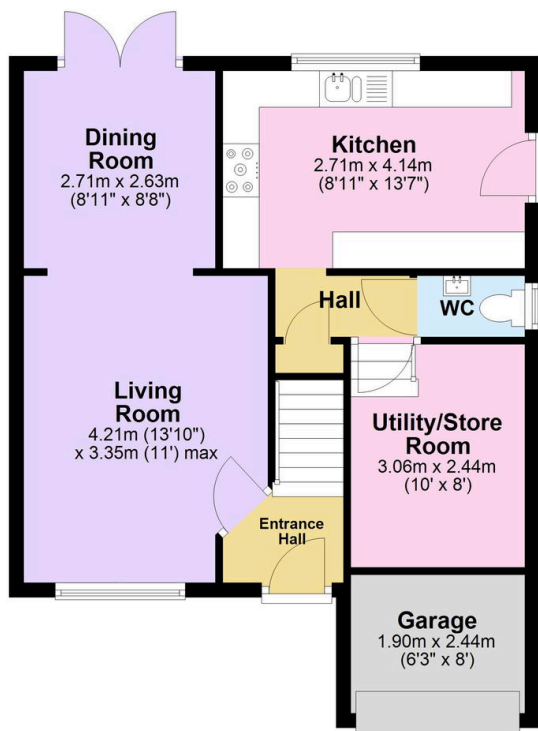
This stunning detached residence on the sought-after Latchbrook estate offers the perfect blend of elegance, comfort, and practicality for discerning families. Boasting exceptional curb appeal with its distinctive red brick façade and meticulously maintained front lawn, this property makes a striking first impression. The attractive driveway provides convenient off-road parking, complementing the appealing street presence. Step inside to discover a bright, welcoming living room bathed in natural light. This versatile space flows seamlessly into the dining area where patio doors create a wonderful indoor-outdoor connection, opening onto the garden beyond. The modern kitchen is a chef's delight, featuring built-in appliances and stylish finishes throughout.

## Key Features

- Freehold - Council Tax Band E - EPC TBC
- Beautiful Detached Home
- Four Well-Proportioned Bedrooms
- Spacious Living Room & Diner
- Modern Kitchen
- Handy Downstairs WC
- Utility / Storage Room
- Rear Enclosed Garden
- Driveway Parking
- Quote BH0675 To Book Your Viewing

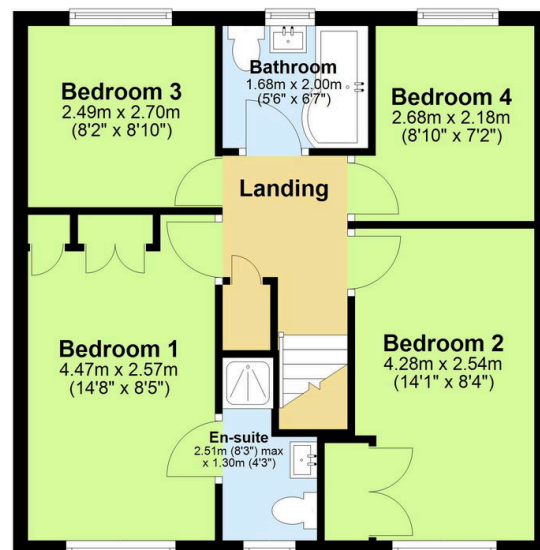
### Ground Floor

Approx. 52.8 sq. metres (568.2 sq. feet)



### First Floor

Approx. 49.2 sq. metres (529.9 sq. feet)



Total area: approx. 102.0 sq. metres (1098.1 sq. feet)