



ZAFER CETINEL

POWERED BY
expTM UK

@ zafer.cetinel@exp.uk.com

zafercetinel.exp.uk.com

01242 374 844

15 The Croftlands, Bredon

£340,000

3 1 1

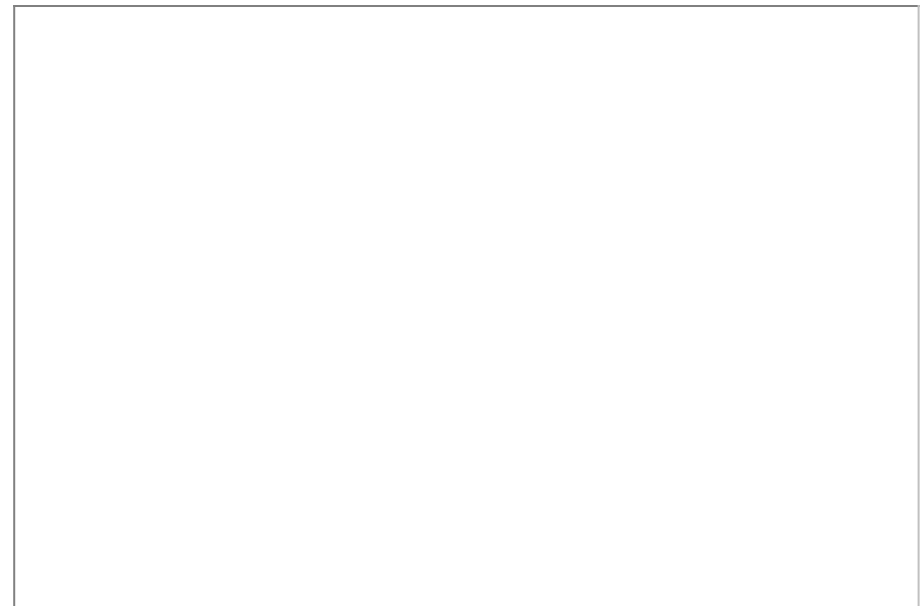
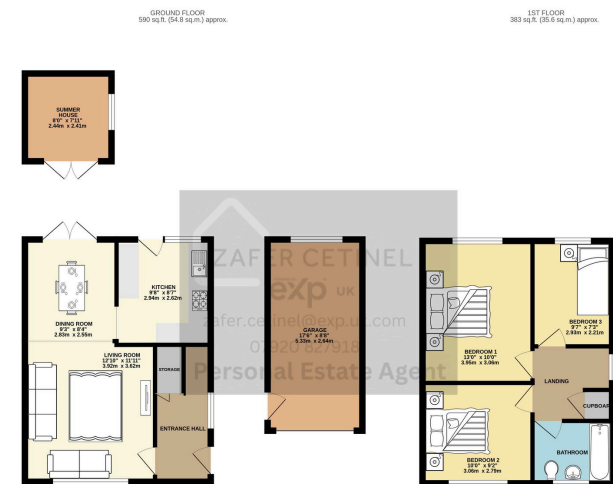
- BREDON, TEWKESBURY
- THREE BEDROOM SEMI DETACHED FAMILY HOME
- LOUNGE / DINER
- GREAT CONDITION
- LOW MAINTENANCE REAR AND FRONT GARDEN
- QUITE CUL DE SAC POSITION WITH AMAZING NEIGHBOURS
- GARAGE AND LONG DRIVEWAY
- GREAT TRANSPORT LINKS AND LOCAL FACILITIES
- SUMMER HOUSE
- REF ZAFER CETINEL



Charming Three-Bedroom Semi-Detached Home in Bredon

Discover this delightful three-bedroom semi-detached property located in the peaceful village of Bredon, it is near Tewkesbury and Cheltenham. Featuring a modern bathroom, spacious lounge, and dining area, this home offers a low-maintenance garden, detached garage, and ample parking with a long driveway. Enjoy a quiet cul-de-sac lifestyle with friendly neighbors. Perfect for families or those seeking tranquility, this property has been lovingly maintained for 24 years.





eXp World UK Ltd is a registered company at Level 37, 25 Canada Square, London, E14 5LQ.
Registered company number is 12016573. VAT Registration Number is 327 4120 29