

Tudor Lodge, 165, Risca Road, Close to Ridgeway

£565,000

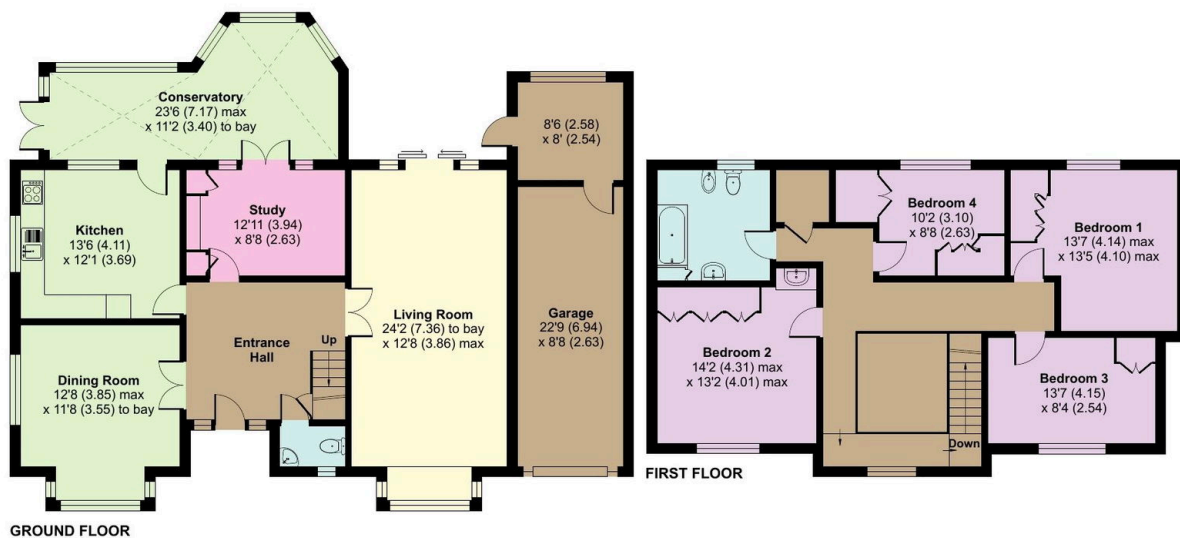
4 2 0



- 4 Bedroom
- 3 reception rooms
- Close to amenities
- Beautiful gardens Front and Rear
- Spacious open hallway and gallery landing
- Driveway for multiple vehicles
- Garage
- Short distance from M4
- Sort after area
- No Chain

Tudor Lodge, 165 Risca Road, Near ridgeway Newport NP20

Approximate Area = 2136 sq ft / 198.4 sq m
Garage = 270 sq ft / 25.1 sq m
Total = 2406 sq ft / 223.5 sq m
For identification only - Not to scale



Floor plan produced in accordance with RICS Property Measurement 2nd Edition, Incorporating International Property Measurement Standards (IPMS2 Residential). © nrichcom 2025. Produced for Lynda Hughes (exp). REF: 1218849

Ref: LH0720

The home is just a short journey from Junction 27 of the M4 giving easy access to Newport, Cardiff and Bristol, ideal for commuters.

This home is highly recommended for a viewing as its a spacious detached family home with many features such as entrance hall, gallery landing and picturesque gardens. The front of the property benefits from a sweeping driveway with parking for multiple vehicles . This sort after property benefits from not being part of a chain and is readily available for easy and quick occupation .