

## St. Edward Gardens

Guide Price £270,000

3 1 1

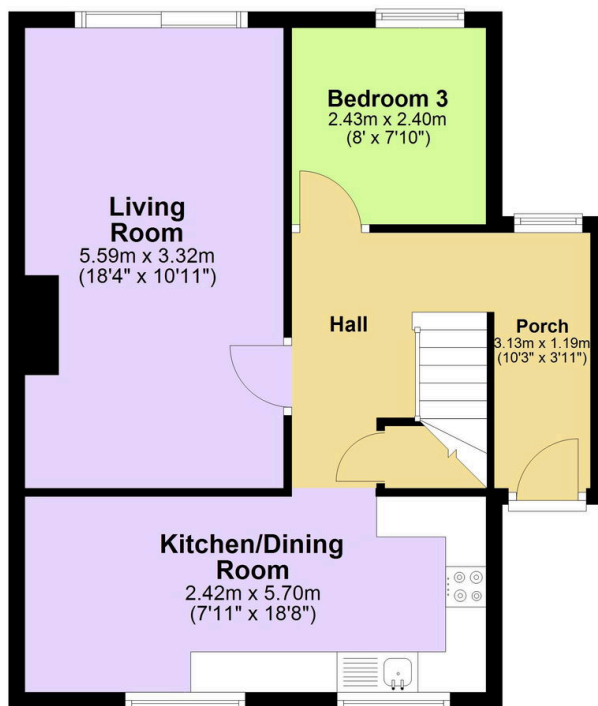


Nestled on a peaceful road in the sought-after Eggbuckland area, this meticulously presented three-bedroom semi-detached home offers flexible living arrangements perfect for modern family life. Step inside and be welcomed by a spacious entrance hall providing the perfect reception area for greeting guests and ample storage for outdoor attire. The generously proportioned living room serves as the heart of the home, bathed in natural light and featuring sliding patio doors that seamlessly connect to the south-facing garden creating a perfect indoor-outdoor flow, ideal for entertaining during the warmer months. The newly fitted kitchen/diner showcases contemporary design with sleek finishes and an abundance of storage cupboards.

## Key Features

- Freehold - Council Tax Band C - EPC D
- Three Well-Proportioned Bedrooms
- Newly Fitted Kitchen / Diner
- Far Reaching Views
- Driveway Parking & Single Garage
- Semi-Detached Home
- Spacious Living Room
- Modern Family Bathroom With Separate WC
- South-Facing Rear Garden
- No Onward Chain Quote BH0675 To Book Your Viewing

Ground Floor



First Floor

