

Hoe Gardens, Plymouth, PL1

Guide Price £420,000

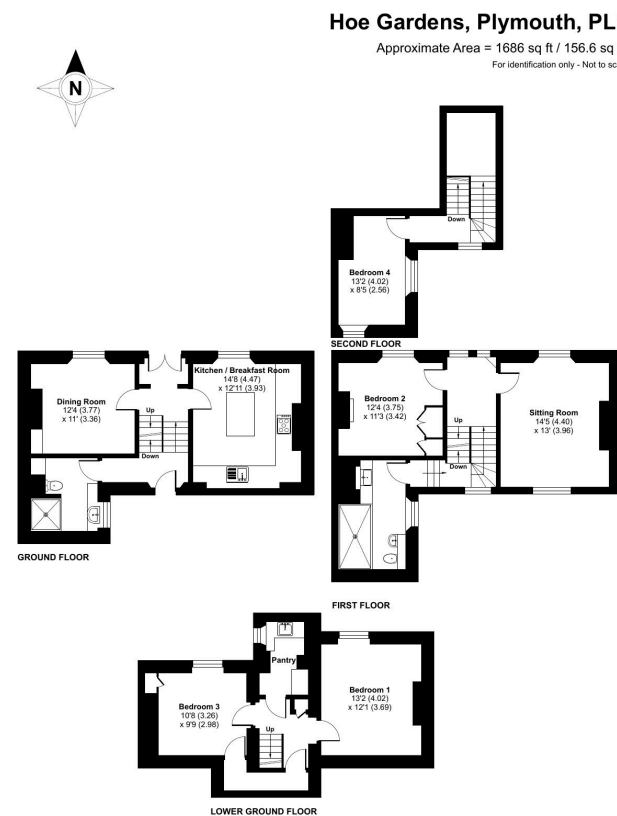
4 2 2



A beautifully appointed, Grade II Listed double-fronted Victorian residence, nestled within private gardens and just a short walk from the Barbican, The Hoe, and Plymouth City Centre. This elegant period property offers spacious and versatile accommodation, making it ideal for families, multi-generational living, or hosting guests. It also presents an attractive investment opportunity, as the current owners run a successful holiday let business, renting out the two lower ground floor bedrooms.

Key Features

- TO ARRANGE A VIEWING PLEASE QUOTE BL0650
- Four Bedrooms
- Spacious Family Home
- Communal Lawned Gardens
- Wonderful Location
- Grade II Listed Double-Fronted Victorian Residence
- Two Bathrooms
- South-Facing Courtyard Garden
- Period Features
- Freehold



Floor plan produced in accordance with RICS Property Measurement Standards incorporating International Property Measurement Standards (IPMS2 Residential). © richcom 2025. Produced for Ben Estates TA Ben Langton Powered By exp. REF: 126323