



EMMA BUTCHER POWERED BY **exp** TM UK

@ emma.butcher@exp.uk.com

🌐 emmabutcher.exp.uk.com

☎ 01373 476440

32 Courts Barton,
Guide Price £240,000

2 1 1

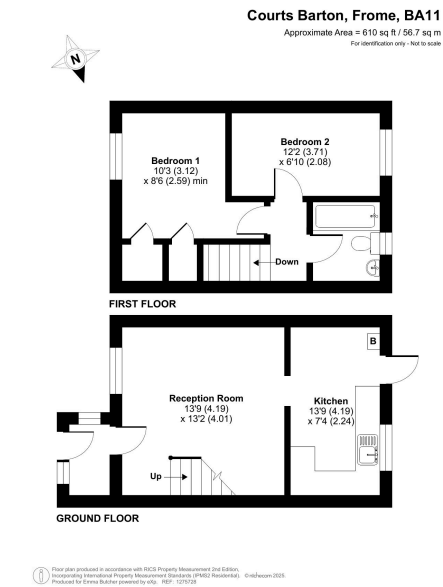


- A Sweet 2 Bedroom Home to suit first time buyers, downsizers or Investors
- Main King Size Bedroom with built in cupboards
- Convenient porchway creating a clutter free environment
- Delightful rear garden with patio space
- Well maintained and tastefully decorated throughout
- Fully equipped Kitchen
- Fully Tiled Bathroom with white sanitaryware
- Located close to amenities either walking or driving
- Allocated courtyard parking spaces
- Quote EB0191 Emma Butcher when booking your personal tour



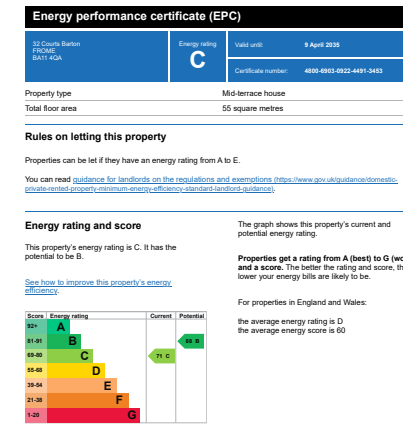


QUOTE REF: EB0191 Are you on the hunt for a cosy and charming home that offers both style and comfort? Look no further than this stunning two-bedroom property with allocated parking on Courts Barton in Frome - a safe and quiet cul-de-sac perfect for children or pets. It is an ideal starter home or place to downsize; whatever your plans you will be happy to call it home.



10/04/2020, 16:13

Energy performance certificate (EPC) - Find an energy certificate - GOV.UK



<https://find-energy-certificate.service.gov.uk/energy-certificate/4808-6903-0922-4491-5453/print/true>

1/4

eXp World UK Ltd is a registered company at Level 37, 25 Canada Square, London, E14 5LQ.
Registered company number is 12016573. VAT Registration Number is 327 4120 29