



MARC REES

exp[®] UK

@ marc.rees@exp.uk.com

marcrees.exp.uk.com

07966 394 188

60 Budshead Road, Plymouth, PL5 2RA

£220,000

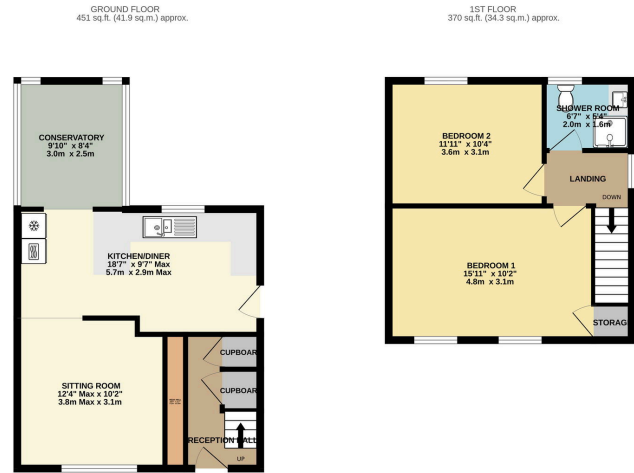
🛏 2 🚿 1 🛋 1

- Please Quote MR0566 when making a telephone enquiry
- 2 Double Bedrooms
- Remodelled Kitchen/Diner
- Many improvements over the last 8 years
- Westerly Facing Rear Garden
- A Fantastic Semi-Detached Home
- Off Road Parking for two vehicles
- Sitting Room with a media wall
- Electrical Upgrade and Gas Central Heating
- Close to Amenities



This is a great opportunity to acquire a fantastic renovated home which over the last 8 years has undergone many improvements including, rendered external walls, roof clean, electrical upgrade, internal replastering and decoration, widened the car hardstand to create parking for two vehicles, remodelled the kitchen/diner and bathroom along with a superb media wall in the sitting room. Rarely do I come across a home as immaculate and well presented with accommodation comprising, reception hall with two understairs storage cupboards, sitting room with a media wall with bio fuel fireplace, spacious kitchen/diner with a breakfast bar, integrated Neff double oven and fridge/freezer, 2 double bedrooms and a lovely shower room. To the outside there is off road parking for 2 vehicles, side entrance leading to the rear garden with a sunny aspect, shed, outside tap and sockets, rockery and water feature. Please quote MR0566 when making a telephone enquiry.





TOTAL FLOOR AREA: 821 sq.ft. (76.2 sq.m.) approx.

Whilst every effort has been made to ensure the accuracy of the floorplans, the measurements of areas, volumes, spaces and any other items are approximate and no responsibility is taken for any error, omission or misstatement. This plan is for illustrative purposes only and should be used as such by any prospective purchaser. The services, fixtures and appliances shown here are not limited and no guarantee as to their operability or efficiency can be given.

Made with Metaphor (2023)

