



ZAFER CETINEL

POWERED BY
exp™
UK

@ zafer.cetinel@exp.uk.com

zafercetinel.exp.uk.com

01242 374 844

PRESTBURY, CHELTENHAM, GL52 2DQ

Offers Over £400,000

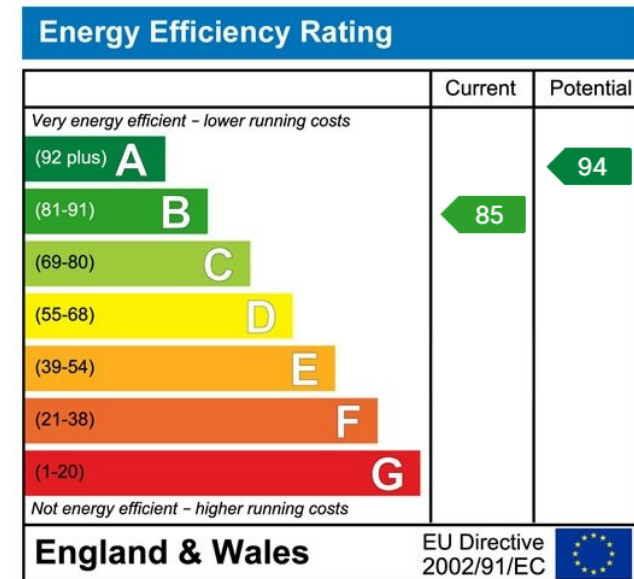
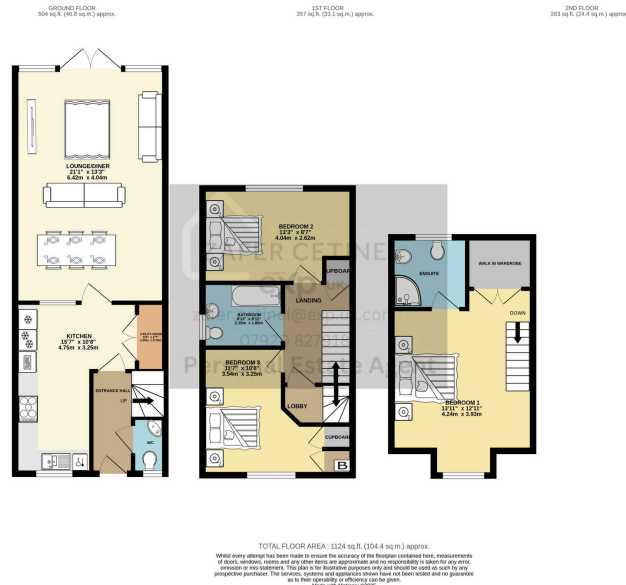
🛏 3 🚿 2 🚗 1



- PRESTBURY, CHELTENHAM
- 2019 BUILT MODERN END TERRACE WITH NHBC WARRANTY
- THREE DOUBLE BEDROOMS
- TWO BATHROOMS
- STUNNING KITCHEN WITH FITTED NEFF APPLIANCES
- SEPARATE UTILITY CUPBOARD
- CORNER PLOT WITH LARGE GARDEN
- DRIVEWAY FOR THREE CARS
- LARGE LOUNGE / DINER
- REF ZAFER CETINEL



Occupying a corner plot, this home offers additional parking and a more spacious garden compared to other properties in the area. As you enter, you'll be greeted by a welcoming entrance hall at features a convenient downstairs toilet and a utility cupboard equipped with a washing machine and tumble dryer. The expansive open-plan lounge and dining area with natural light and patio doors that lead to the rear garden, complemented by stylish glass panel doors. The kitchen is designed with Karndean flooring and stylish countertops and comes fully equipped with an integrated fridge/freezer, dishwasher, oven, and hob. On the first floor, you'll find two generously sized double bedrooms along with a family bathroom. The master bedroom occupies the entire top floor, complete with an en-suite shower room, air conditioning and built-in wardrobes. The rear garden is a good size, with young fruit trees and shrubs. Additionally, there is a driveway for three cars.



eXp World UK Ltd is a registered company at Level 37, 25 Canada Square, London, E14 5LQ.

Registered company number is 12016573. VAT Registration Number is 327 4120 29