

8a The Beeches, Shaw

Offers Over £400,000

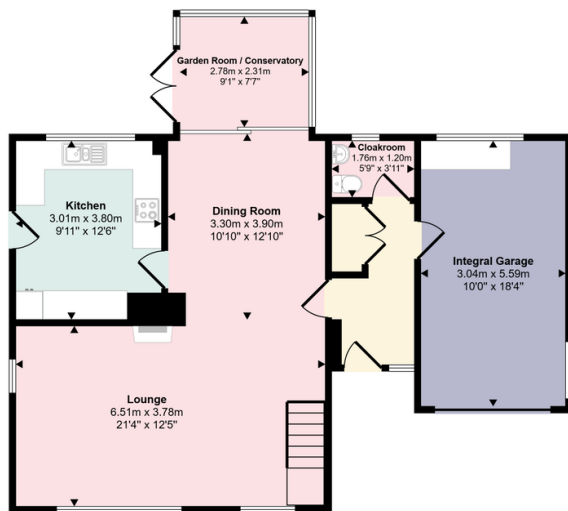
🛏 3 🚿 1 🚗 1



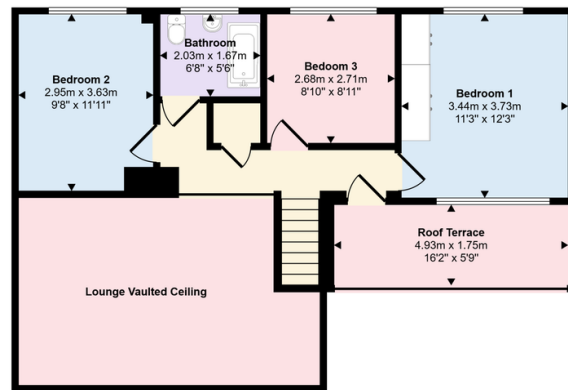
- Wrap around gardens
- Ample parking with integral garage and driveway
- Refitted bathroom with contemporary finish
- Fitted kitchen
- Three bedrooms
- Feature vaulted ceiling in lounge
- Light and airy accommodation
- Open plan styled living space
- Individually designed detached family home
- REF: MT1071



Approx Gross Internal Area
128 sq m / 1377 sq ft



Ground Floor
Approx 84 sq m / 907 sq ft



First Floor
Approx 44 sq m / 470 sq ft

This floorplan is only for illustrative purposes and is not to scale. Measurements of rooms, doors, windows, and any items are approximate and no responsibility is taken for any error, omission or mis-statement. Icons of items such as bathroom suites are representations only and may not look like the real items. Made with Made Snappy 360.

REF: MT1071 Individually designed, detached family home which is ideally situated within the highly regarded village of Shaw in a wonderful location opposite the open green space of Shaw Recreation Ground. The superbly proportioned accommodation comprises three bedrooms, refitted family bathroom, roof terrace and a galleried landing on the first floor. Downstairs, there is an open plan styled lounge and dining area with an impressive vaulted ceiling, which creates a wonderfully light and airy living space. Additionally there is a well-appointed fitted kitchen which enjoys views to the rear garden, a useful conservatory / garden room, cloakroom / WC and a reception hallway. Centrally positioned within the plot, this lovely property is surrounded by private lawned gardens and benefits from ample off-road parking with a large gravelled driveway which leads to an integral garage. Offered with no onward chain.