



SIMON THOMPSON

exp[®] UK

@ simon.thompson@exp.uk.com

simonthompson.exp.uk.com

☎ 07879 656 288

2 Laburnum Villas, Hartpury

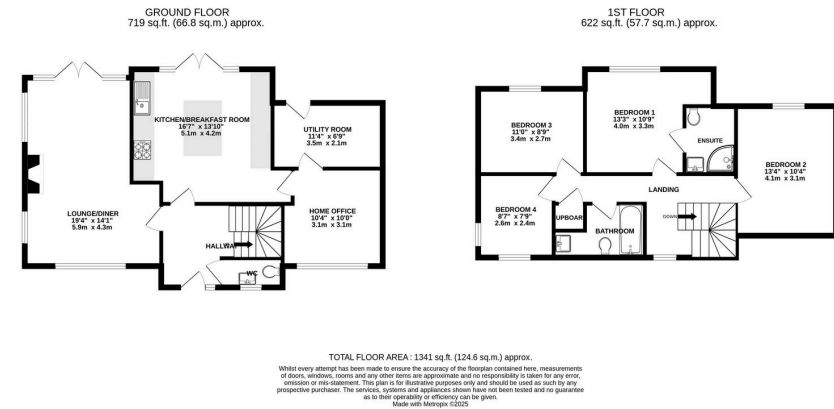
£525,000

🛏 4 🍽 2 🛋 2



- A beautifully presented four bedroom detached home
- Kitchen / Breakfast room with integrated appliances
- Utility room
- 19 ft lounge / diner with wood burning fireplace and French doors onto the garden
- Converted garage now a handy home office / playroom
- Master bedroom with en suite shower room
- Beautifully landscaped rear garden
- Built in 2018 and benefitting from the remaining NHBC warranty
- Located within a small close, in the heart of this highly desirable village
- Property Ref ST0728





Welcome to Laburnum Villas, a lovely four-bedroom detached family home constructed in 2018. Located in this small cul de sac, within the heart of the village, the home is beautifully appointed and ready to move into, enjoying a wealth of accommodation across the two floors as well as the lovingly manicured rear garden.

