

**Ringswell Gardens, Bath, BA1 6BP**

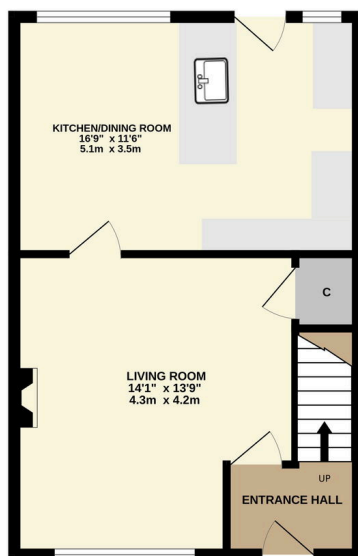
Guide Price £400,000

3 1 2

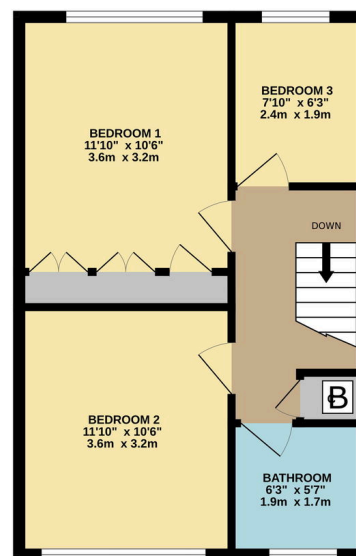


- PROPERTY REFERENCE SL 0822 - Simon Lord
- Adjacent to Kensington Meadows
- Living Room
- South West facing rear garden
- Garage and parking
- Desirable Larkhall Village location
- Three Bedrooms
- Refitted open plan Kitchen/Dining Room
- Gas central heating and double glazing
- 940 years lease remaining

GROUND FLOOR  
435 sq.ft. (40.4 sq.m.) approx.



1ST FLOOR  
437 sq.ft. (40.6 sq.m.) approx.



TOTAL FLOOR AREA: 872 sq.ft. (81.0 sq.m.) approx.  
Whilst every attempt has been made to ensure the accuracy of the floorplan contained here, measurements of doors, windows, rooms and any other items are approximate and no responsibility is taken for any error, omission or mis-statement. This plan is for illustrative purposes only and should be used as such by any prospective purchaser. The services, systems and appliances shown have not been tested and no guarantee as to their operability or efficiency can be given.  
Made with Metropix ©2025

An impressive and highly appealing three bedroom home situated in a no through close on the edge of Larkhall Village, with south west facing garden and sited directly adjacent to Kensington Meadows