



10 Buccaneer Avenue, Brockworth
£324,950

4 2

Ref: NE0738

Located in the sought after Coopers Edge development, this beautifully presented four-bedroom, three-storey townhouse offers the ideal blend of space, style, and convenience.

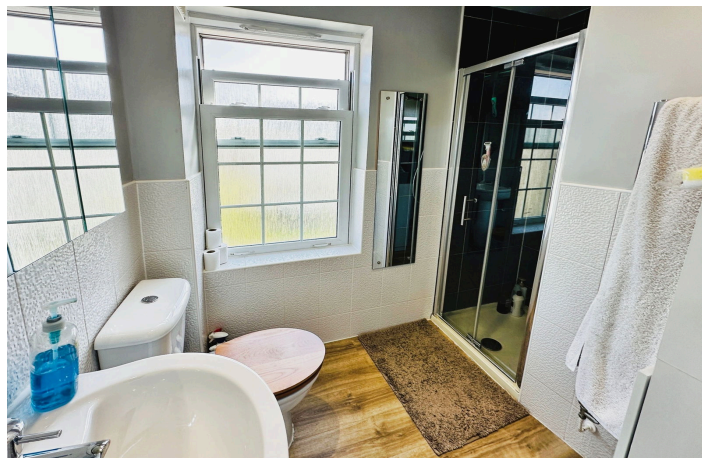
Step inside to find versatile living across three floors, perfect for modern family life. The ground floor features a bright, open-plan kitchen/dining room with French doors leading out to a private south west facing garden, ideal for sunny afternoons and evening entertaining. There is also a handy downstairs cloakroom and bedroom 3.

Upstairs, a generous hallway, living room and family bathroom. The top floor boasts a spacious master bedroom with en-suite and an additional large double bedroom as well as a 4th bedroom / study.

Outside, you'll find a private driveway and garage.

Situated close to schools, parks, shops and with fantastic commuter links to Gloucester, Cheltenham and the M5, this is a well designed modern home.

- NE0738
- 4 Bedroom Townhouse
- Kitchen/Diner, Living Room
- Bathroom, En Suite & Cloakroom
- Double Glazing & GCH
- Good Transport Links



Floor Area: sq. ft.

Tenure: Not given

Service Charge: £ per annum

Ground Rent: £ per annum

