



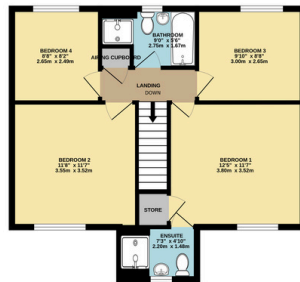
70 Aries Hill, Liskeard, PL14 3GN



GROUND FLOOR
582 sq.ft. (54.1 sq.m.) approx.



1ST FLOOR
577 sq.ft. (53.6 sq.m.) approx.

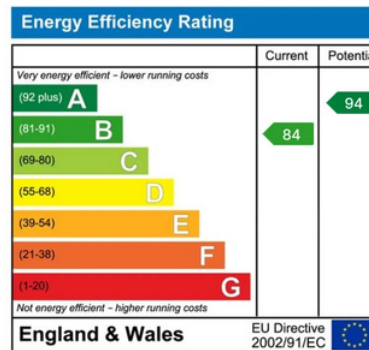


Description

- Modern Detached House Built in 2021
- 4 Bedrooms with an En-Suite to the Master
- Modern Fitted Kitchen/ Dining Room
- Utility Room
- Large Enclosed South Facing Rear Garden
- Double Garage with Electric Doors
- Driveway Parking for 4 Cars
- Gas Central Heating & Double Glazing
- Owned Solar Panels with 5kw Battery

Location

Aries Hill is situated within the Charter Walk development, less than a mile from Liskeard town centre. Liskeard offers a variety of retail amenities, supermarkets, and a leisure centre. The area is well-connected, with easy access to the A38, linking Plymouth to Cornwall, as well as a mainline railway station providing direct services from London Paddington to Penzance. For those who enjoy the outdoors, Bodmin Moor and Siblyback Lake are both within six miles, offering stunning landscapes and recreational activities.





01579 381090



paul.marshall@exp.uk.com



www.paulmarshall.exp.uk.com



PAUL MARSHALL

POWERED BY
exp UK