

Lowertown Close, Landrake, PL12 5DG

Guide Price £325,000

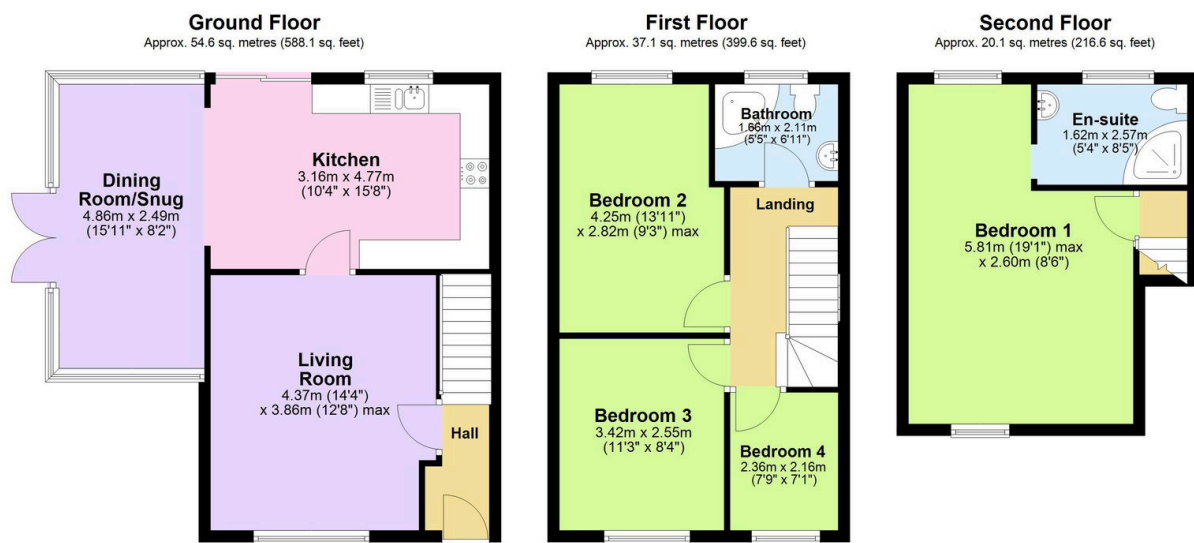
4 2 2



Upon entering this remarkable home, you'll immediately appreciate the bright and airy atmosphere that flows throughout. The gorgeous living room is sun-drenched thanks to thoughtfully positioned windows that maximize natural light, creating a warm and inviting space for family gatherings and relaxation. The heart of this home is undoubtedly the spacious modern kitchen, complete with high-quality built-in appliances and contemporary finishes. French doors lead directly to the garden, seamlessly blending indoor and outdoor living – perfect for summer entertaining. A stunning feature of this property is the wonderful dining room extension, which has been thoughtfully designed to include a cosy snug area. This versatile space adapts perfectly to modern family life, offering areas for formal dining as well as comfortable relaxation.

Key Features

- Freehold - Council Tax Band C - EPC C
- Extended Semi-Detached Home
- Four Well-Proportioned Bedrooms
- Breathtaking Panoramic Views
- En-Suite Shower Room
- Spacious Kitchen & Dining Room
- Gorgeous Living Room
- Easy To Maintain Garden
- Off-Road Parking & Garage
- Quote BH0675 To Book Your Viewing



Total area: approx. 111.9 sq. metres (1204.4 sq. feet)