



SCOTT WINDLE POWERED BY exp TM UK

@ scott.windle@exp.uk.com

scottwindle.exp.uk.com

07838 311 550

Fredericks Way, Burton, Chippenham

Guide Price £375,000

3 1 1



Reference; SW0341 Charming three bedroom link detached property located in the heart of the pretty Cotswold village of Burton. This lovely home offers a tremendous amount of potential and would be ideal for buyers who would like to put their own stamp on a property as a degree of cosmetic updating is required. The well proportioned accommodation comprises; Entrance hall, downstairs cloakroom, spacious lounge / dining room, kitchen, three bedrooms and a family bathroom. Outside, the property has an easily maintainable garden laid mainly to lawn with side access and a door into the single garage with driveway parking in front. Situated in a sought-after location with the beautiful countryside right on your door step, the property enjoys easy access to the village's popular amenities, including the Old House At Home pub and Farmshop & Kitchen, while excellent road and rail links make commuting to Bath, Bristol, and London convenient. The property is offered to the market with NO ONWARD CHAIN and an internal viewing is highly recommended.

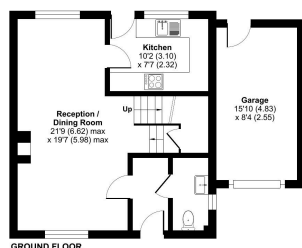
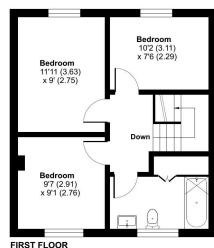
Situation

Burton is a pretty Cotswold village, perfectly positioned between the popular villages of Tormarton and Yatton Keynell. It offers amenities, including a church, the popular Old House At Home pub, and the Farmshop & Kitchen. The area is renowned for the Badminton Horse Trials, a world famous equestrian event, and is surrounded by beautiful countryside, including the wonderful Westonbirt Arboretum. Nearby, the village of Castle Combe—often described as 'The Prettiest Village in England'—is well known for its film locations, as well as its motor racing circuit, the luxurious Manor House Hotel, and a picturesque golf course. For families, primary schools are available in the nearby villages of Acton Turville and Yatton Keynell, with the latter also offering a shop, post office, and doctor's surgery. The market town of Chippenham is within easy reach, providing a wider range of amenities, including secondary schools and a mainline railway station with connections to London Paddington and Bristol Temple Meads. With the M4 (Junction 18) close by, Burton enjoys excellent road links to Bath, Bristol, Swindon, Cardiff, and London, making it an ideal location for both village charm and modern convenience.



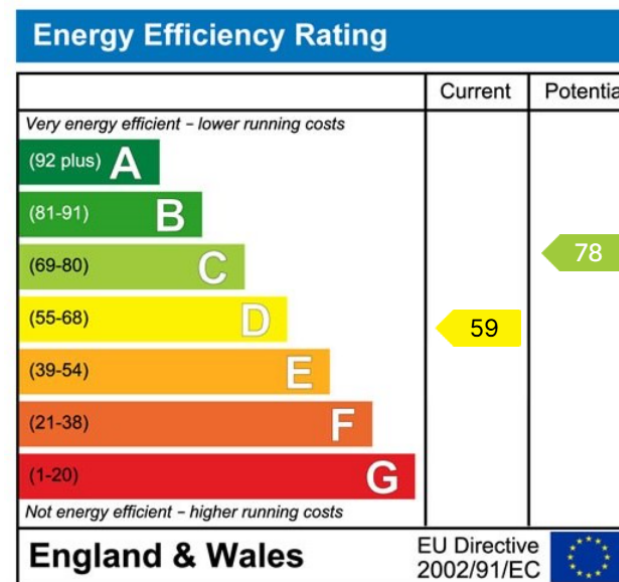
Fredericks Way, Burton, Chippenham, SN14

Approximate Area = 866 sq ft / 80.4 sq m
Garage = 133 sq ft / 12.3 sq m
Total = 999 sq ft / 92.7 sq m
For identification only - Not to scale



For identification only - Not to scale
This plan is provided in accordance with RICS Property Measurement Standards incorporating International Property Measurement Standards (IPMS) Recommendations. © eXp World 2025. Produced by eXp World. Powered by eXp. REF: 12016573

- Please Quote Reference SW0341
- Three Bedroom Link Detached House
- Easily Maintainable Garden
- Excellent Access To M4 Motorway
- Viewing Recommended
- Popular Cotswold Village
- Lounge / Dining Room
- Garage & Driveway Parking In Front
- In Need Of Some Cosmetic Updating
- No Onward Chain



eXp World UK Ltd is a registered company at Level 37, 25 Canada Square, London, E14 5LQ.

Registered company number is 12016573. VAT Registration Number is 327 4120 29